

SPACECRAFT COMPONENTS CORP.

Your Connector Consultant Since 1962

VG96929 Style

**SINGLE POLE,
HIGH POWER/LOW VOLTAGE
CONNECTORS**



**SPACECRAFT
COMPONENTS CORP.**

CATALOG 875

SPACECRAFT AT A GLANCE

Your Connector
Consultant
Since 1962



Founded in 1962, Spacecraft is a family-owned, leading manufacturer and distributor of cylindrical connectors for the railways/transit, military, aerospace and various harsh environment markets.

As a Manufacturer, Spacecraft's core focus is manufacturing reverse bayonet connectors geared towards railway and transit applications. Our extensive engineering and manufacturing experience with reverse bayonet connectors provides us with the opportunity to offer a broad range of derivative cylindrical products in a short period of time with an assurance of exceptional quality.

As a Distributor, Spacecraft has developed key partnerships with world-class manufacturers whose products encompass MIL-SPEC and harsh environment industrial connectors. We are an authorized MIL-STD-790 value-added assembler for our principal connector manufacturers, such as Souriau, Corsair, Sunbank and Astro Tool Corp. We stock a wide and deep variety of QPL components which enables us to provide a vast assortment of completed QPL connectors within a three-day turnaround.

As an Organization, Spacecraft prides itself on providing consultative service by utilizing our greatest asset: Our people!

Spacecraft invites you to tour our best-in-class facility located in North Las Vegas, Nevada, USA.

Spacecraft's Core Values

- AS9100/ISO 9001 Registered
- MIL-STD-790 Certified
- Technical Solutions Oriented
- A Consultative Sales Team
- Vertically Integrated
- Supporter of the Buy American Act

48 Hour Power

You have our commitment to assemble and deliver stock-to-build products from Souriau and Corsair within 48 Hours.

CIDS (Connector Identification System)

Your Online Source for MIL-SPEC Cylindrical Connectors



- Access to MIL-SPEC Data Sheets in an Instant
- Identify Crimp Tools for Your Contacts
- Identify the Mating Connector
- Identify the Accessories for Your Connector



Exceeding Your Quality Expectations

Spacecraft Components Corp. warrants to the original purchaser that it will correct by replacement any defect in workmanship or in-operation of any component purchased from Spacecraft Components Corp. for the life of the equipment in which the component is originally and properly installed. This agreement and warranty supersedes all other warranties expressed or implied.

Mission Statement

To provide a work environment where our employees can meet their potential and thrive in an atmosphere of excellence by utilizing their strengths and attributes towards supporting our customers, thereby providing superior products and exceptional service which helps our customers gain a competitive advantage in their markets.

Locations

Nevada Headquarters 702.851.7600
Florida Office 954.748.4540
South Carolina Office 954.748.4540
Italy Office +39 (335) 719.4512



VG96929 Style Single Pole, High Power/Low Voltage Connectors

© 2022 Spacecraft Components Corp., North Las Vegas, Nevada 89032

Catalog 875 Table of Contents

Ordering Information	IV
Panel Mount Receptacle	1K-1
In Line Receptacle	1K-3
Straight Plug	1K-5
Jam Nut Receptacle	1K-7
Thru Bulk Head	1K-9
90° Plug	1K-10
Insert Arrangements & Polarization	1K-11
Crimp Pin & Socket Contacts	1K-12
Threaded Pin & Socket Contacts	1K-13
Dust Cap for Plug	1K-14
Dust Cap for Receptacle	1K-14
Dummy Receptacle	1K-15
Gasket for Receptacles	1K-17
Termination Bands	1K-18
Index	1K-20

SPACECRAFT PART NUMBER EQUIVELANTS

VG PART NO.	SPACECRAFT PART NO.
VG96929A1-18FN	SCPB9690E18FN
VG96929A1-18FW	SCPB9690E18FW
VG96929A1-18ZN	SCPB9690E18ZN
VG96929A1-18ZW	SCPB9690E18ZW
VG96929A1-22FN	SCPB9690E22FN
VG96929A1-22FW	SCPB9690E22FW
VG96929A1-22ZN	SCPB9690E22ZN
VG96929A1-22ZW	SCPB9690E22ZW
VG96929A1-28FN	SCPB9690E28FN
VG96929A1-28FW	SCPB9690E28FW
VG96929A1-28ZN	SCPB9690E28ZN
VG96929A1-28ZW	SCPB9690E28ZW
VG96929A1-32FN	SCPB9690E32FN
VG96929A1-32FW	SCPB9690E32FW
VG96929A1-32ZN	SCPB9690E32ZN
VG96929A1-32ZW	SCPB9690E32ZW
VG96929A2-18FN	SCPB9690T18FN
VG96929A2-18FW	SCPB9690T18FW
VG96929A2-18ZN	SCPB9690T18ZN
VG96929A2-18ZW	SCPB9690T18ZW
VG96929A2-22FN	SCPB9690T22FN
VG96929A2-22FW	SCPB9690T22FW
VG96929A2-22ZN	SCPB9690T22ZN
VG96929A2-22ZW	SCPB9690T22ZW
VG96929A2-28FN	SCPB9690T28FN
VG96929A2-28FW	SCPB9690T28FW
VG96929A2-28ZN	SCPB9690T28ZN
VG96929A2-28ZW	SCPB9690T28ZW
VG96929A2-32FN	SCPB9690T32FN
VG96929A2-32FW	SCPB9690T32FW
VG96929A2-32ZN	SCPB9690T32ZN
VG96929A2-32ZW	SCPB9690T32ZW
VG96929B1-16FN	SCPB9690G16FN
VG96929B1-16FW	SCPB9690G16FW
VG96929B1-16ZN	SCPB9690G16ZN
VG96929B1-16ZW	SCPB9690G16ZW
VG96929B1-18FN	SCPB9690G18FN
VG96929B1-18FW	SCPB9690G18FW
VG96929B1-18ZN	SCPB9690G18ZN
VG96929B1-18ZW	SCPB9690G18ZW
VG96929B1-22FN	SCPB9690G22FN
VG96929B1-22FW	SCPB9690G22FW
VG96929B1-22ZN	SCPB9690G22ZN
VG96929B1-22ZW	SCPB9690G22ZW
VG96929B1-28FN	SCPB9690G28FN
VG96929B1-28FW	SCPB9690G28FW
VG96929B1-28ZN	SCPB9690G28ZN
VG96929B1-28ZW	SCPB9690G28ZW
VG96929B1-32FN	SCPB9690G32FN
VG96929B1-32FW	SCPB9690G32FW
VG96929B1-32ZN	SCPB9690G32ZN
VG96929B1-32ZW	SCPB9690G32ZW

VG PART NO.	SPACECRAFT PART NO.
VG96929E-22FN	SCPB9698G2-22FN
VG96929E-22FW	SCPB9698G2-22FW
VG96929E-22ZN	SCPB9698G2-22ZN
VG96929E-22ZW	SCPB9698G2-22ZW
VG96929E-28FN	SCPB9698G2-28FN
VG96929E-28FW	SCPB9698G2-28FW
VG96929E-28ZN	SCPB9698G2-28ZN
VG96929E-28ZW	SCPB9698G2-28ZW
VG96929E-32FN	SCPB9698G2-32FN
VG96929E-32FW	SCPB9698G2-32FW
VG96929E-32ZN	SCPB9698G2-32ZN
VG96929E-32ZW	SCPB9698G2-32ZW
VG96929F-16FN	SCPB9696G2-16FN
VG96929F-16FW	SCPB9696G2-16FW
VG96929F-16ZN	SCPB9696G2-16ZN
VG96929F-16ZW	SCPB9696G2-16ZW
VG96929F-18FN	SCPB9696G2-18FN
VG96929F-18FW	SCPB9696G2-18FW
VG96929F-18ZN	SCPB9696G2-18ZN
VG96929F-18ZW	SCPB9696G2-18ZW
VG96929F-22FN	SCPB9696G2-22FN
VG96929F-22FW	SCPB9696G2-22FW
VG96929F-22ZN	SCPB9696G2-22ZN
VG96929F-22ZW	SCPB9696G2-22ZW
VG96929F-28FN	SCPB9696G2-28FN
VG96929F-28FW	SCPB9696G2-28FW
VG96929F-28ZN	SCPB9696G2-28ZN
VG96929F-28ZW	SCPB9696G2-28ZW
VG96929F-32FN	SCPB9696G2-32FN
VG96929F-32FW	SCPB9696G2-32FW
VG96929F-32ZN	SCPB9696G2-32ZN
VG96929F-32ZW	SCPB9696G2-32ZW
VG96929G-16FN	SCPB9696G16FN
VG96929G-16FW	SCPB9696G16FW
VG96929G-16ZN	SCPB9696G16ZN
VG96929G-16ZW	SCPB9696G16ZW
VG96929G-18FN	SCPB9696G18FN
VG96929G-18FW	SCPB9696G18FW
VG96929G-18ZN	SCPB9696G18ZN
VG96929G-18ZW	SCPB9696G18ZW
VG96929G-22FN	SCPB9696G22FN
VG96929G-22FW	SCPB9696G22FW
VG96929G-22ZN	SCPB9696G22ZN
VG96929G-22ZW	SCPB9696G22ZW
VG96929G-28FN	SCPB9696G28FN
VG96929G-28FW	SCPB9696G28FW
VG96929G-28ZN	SCPB9696G28ZN
VG96929G-28ZW	SCPB9696G28ZW
VG96929G-32FN	SCPB9696G32FN
VG96929G-32FW	SCPB9696G32FW
VG96929G-32ZN	SCPB9696G32ZN
VG96929G-32ZW	SCPB9696G32ZW



INTRODUCTION TO SCP B969* CONNECTORS

The SCP B969* connectors shown here are single pole connectors derived from VG95234 reverse Bayonet connectors and the VG96929 standard. Designed to meet high-power / low voltage requirements, this series of connectors is typically used in military vehicles and various industrial equipment.

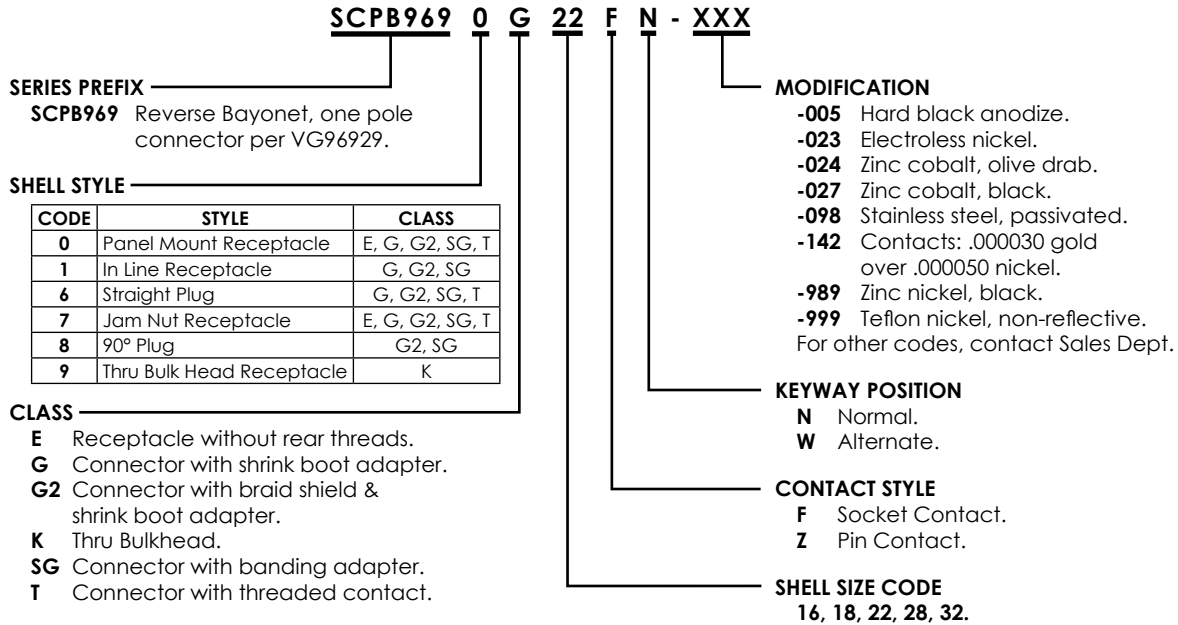
SCP B969* connectors are constructed with two PTFE insulators that are retained inside the shell with a snap ring which allows an unlimited exchange of contacts. Multiple exterior and interior O-Rings create a water pressure tightness of one (1) bar.

Shell material is machined from Aluminum Alloy with different types of surface finishes. Easy to terminate crimp contacts are machined from copper alloy plated with silver plating.

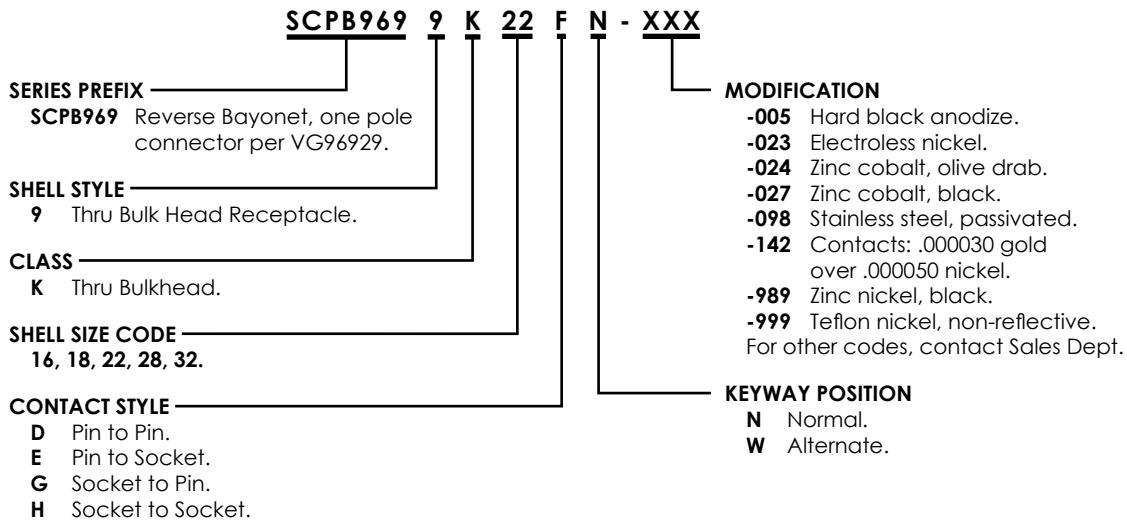
TECHNICAL CHARACTERISTICS

- Operating temperatures from -55 Deg. C to +125 Deg. C
- Environmental seal in mated condition up to one (1) bar
- Suitable for Cables from 25 sq. mm to 240 sq. mm
- Visual and Audible coupling indicators
- 1/4 turn bayonet coupling for fast and easy mating
- High Shock & Vibration Resistance
- Keyed Polarization
- Banding Adapter option to use with M85049/128** termination bands

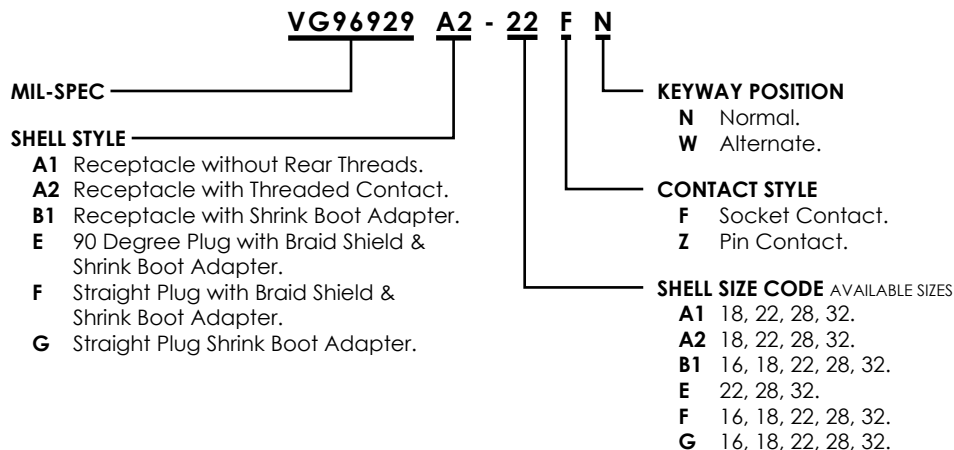
SCPB969 REVERSE BAYONET ORDERING INFORMATION



THRU-BULKHEAD RECEPTACLE



VG96929 ORDERING INFORMATION REFERENCE ONLY



PANEL MOUNT RECEPTACLE

SCPB9690E*

VG96929A1* STYLE

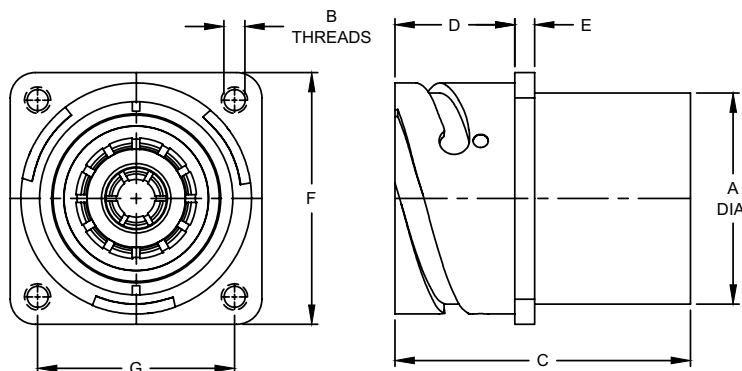
MOUNTING HOLE OPTION



THREADED

MOUNTING HOLE CODES

CODE	MOUNTING HOLE TYPE
None	Metric thread per VG96929
FF	Thru holes
UN	UNC thread



SHELL SIZE	A DIA. ± 0.06 [± 0.15]	B			C ± 0.12 [± 0.3]	D ± 0.12 [± 0.3]	E ± 0.04 [± 0.1]	F ± 0.12 [± 0.3]	G ± 0.04 [± 0.1]
		METRIC THDS	THRU HOLE	UNC THDS					
16	.893 [22.7]	M4	.170 [4.3]	8-32	1.614 [41.0]	.787 [20.00]	.126 [3.2]	1.280 [32.5]	.969 [24.6]
18	1.063 [27.0]	M4	.170 [4.3]	8-32	1.969 [50.0]	.911 [23.15]	.157 [4.0]	1.378 [35.0]	1.063 [27.0]
22	1.374 [34.9]	M4	.170 [4.3]	8-32	2.126 [54.0]	.911 [23.15]	.157 [4.0]	1.614 [41.0]	1.252 [31.8]
28	1.748 [44.4]	M5	.209 [5.3]	10-24	2.571 [65.3]	.951 [24.15]	.157 [4.0]	2.000 [50.8]	1.563 [39.7]
32	1.937 [49.2]	M5	.209 [5.3]	10-24	2.630 [66.8]	1.142 [29.00]	.157 [4.0]	2.244 [57.0]	1.752 [44.5]

Dimensions in brackets [] are in millimeters.

Size 16 not listed in VG96929.

Mounting holes are metric for VG96929.

PANEL MOUNT RECEPTACLE

WITH SHRINK BOOK ADAPTER

SCPB9690G*

VG96929B1* STYLE

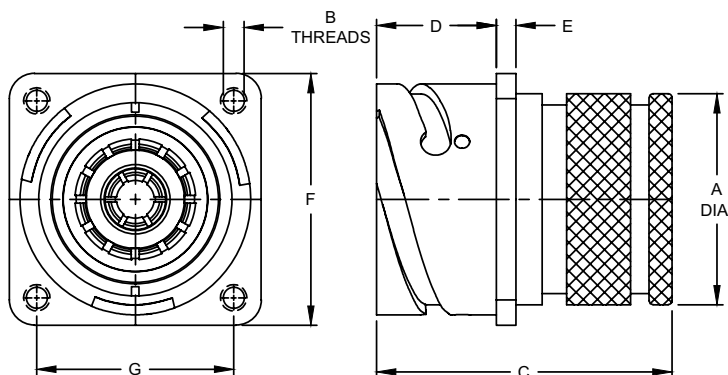
MOUNTING HOLE OPTION



THREADED

MOUNTING HOLE CODES

CODE	MOUNTING HOLE TYPE
None	Metric thread per VG96929
FF	Thru holes
UN	UNC thread



SHELL SIZE	A DIA. MAX.	B			C ± 0.16 [± 0.4]	D ± 0.12 [± 0.3]	E ± 0.12 [± 0.4]	F ± 0.12 [± 0.3]	G ± 0.04 [± 0.1]
		METRIC THDS	THRU HOLE	UNC THDS					
16	.893 [22.7]	M4	.170 [4.3]	8-32	1.614 [41.0]	.787 [20.00]	.126 [3.2]	1.280 [32.5]	.969 [24.6]
18	1.118 [28.4]	M4	.170 [4.3]	8-32	1.969 [50.0]	.907 [23.05]	.157 [4.0]	1.378 [35.0]	1.063 [27.0]
22	1.389 [35.3]	M4	.170 [4.3]	8-32	2.126 [54.0]	.907 [23.05]	.157 [4.0]	1.614 [41.0]	1.252 [31.8]
28	1.763 [44.8]	M5	.209 [5.3]	10-24	2.571 [65.3]	.947 [24.05]	.157 [4.0]	2.000 [50.8]	1.563 [39.7]
32	1.952 [49.6]	M5	.209 [5.3]	10-24	2.630 [66.8]	1.138 [28.90]	.157 [4.0]	2.244 [57.0]	1.752 [44.5]

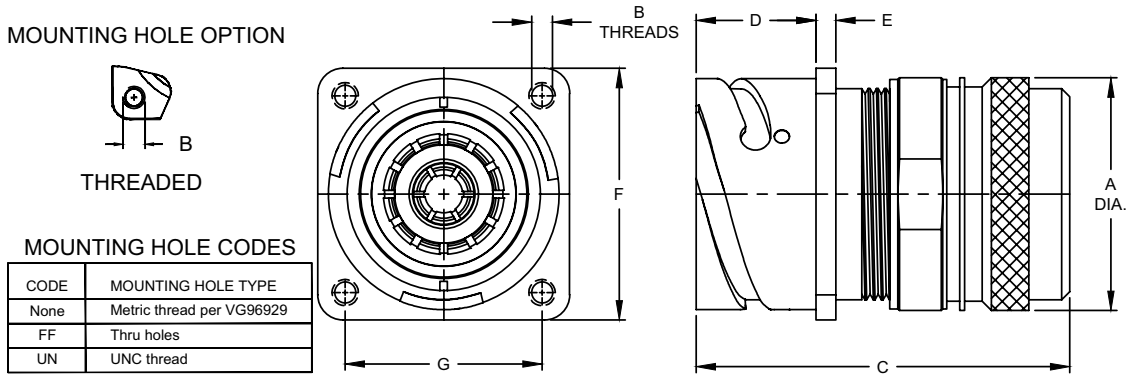
Dimensions in brackets [] are in millimeters.

Mounting holes are metric for VG96929.

PANEL MOUNT RECEPTACLE

WITH ADAPTER FOR EMI/RFI BRAID SHIELD & SHRINK BOOT

SCPB9690G*



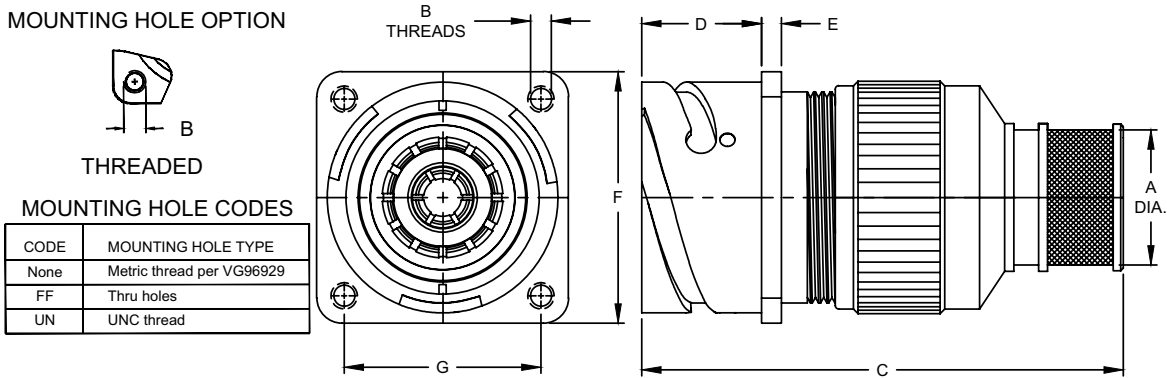
SHELL SIZE	A DIA. MAX.	B			C MAX.	D $\pm 0.012 [\pm 0.3]$	E $\pm 0.004 [\pm 0.1]$	F $\pm 0.012 [\pm 0.3]$	G $\pm 0.004 [\pm 0.1]$
		METRIC THDS	THRU HOLE	UNC THDS					
16	1.023 [26.0]	M4	.170 [4.3]	8-32	2.756 [70.0]	.787 [20.00]	.126 [3.2]	1.280 [32.5]	.969 [24.6]
18	1.260 [32.0]	M4	.170 [4.3]	8-32	2.992 [76.0]	.911 [23.15]	.157 [4.0]	1.378 [35.0]	1.063 [27.0]
22	1.457 [37.0]	M4	.170 [4.3]	8-32	3.366 [86.0]	.911 [23.15]	.157 [4.0]	1.614 [41.0]	1.252 [31.8]
28	1.732 [44.0]	M5	.209 [5.3]	10-24	3.858 [98.0]	.951 [24.15]	.157 [4.0]	2.000 [50.8]	1.563 [39.7]
32	2.031 [51.6]	M5	.209 [5.3]	10-24	3.858 [98.0]	1.142 [29.00]	.157 [4.0]	2.244 [57.0]	1.752 [44.5]

Dimensions in brackets [] are in millimeters.

PANEL MOUNT RECEPTACLE

WITH BANDING ADAPTER

SCPB9690SG*



SHELL SIZE	A DIA. MIN.	B			C MAX.	D $\pm 0.012 [\pm 0.3]$	E $\pm 0.004 [\pm 0.1]$	F $\pm 0.012 [\pm 0.3]$	G $\pm 0.004 [\pm 0.1]$
		METRIC THDS	THRU HOLE	UNC THDS					
16	.528 [13.4]	M4	.170 [4.3]	8-32	2.756 [70.0]	.787 [20.00]	.126 [3.2]	1.280 [32.5]	.969 [24.6]
18	.787 [20.0]	M4	.170 [4.3]	8-32	2.992 [76.0]	.911 [23.15]	.157 [4.0]	1.378 [35.0]	1.063 [27.0]
22	.945 [24.0]	M4	.170 [4.3]	8-32	3.386 [86.0]	.911 [23.15]	.157 [4.0]	1.614 [41.0]	1.252 [31.8]
28	1.181 [30.0]	M5	.209 [5.3]	10-24	3.858 [98.0]	.951 [24.15]	.157 [4.0]	2.000 [50.8]	1.563 [39.7]
32	1.378 [35.0]	M5	.209 [5.3]	10-24	3.858 [98.0]	1.142 [29.00]	.157 [4.0]	2.244 [57.0]	1.752 [44.5]

Dimensions in brackets [] are in millimeters.



PANEL MOUNT RECEPTACLE

WITH THREADED CONTACT

SCPB9690T*

VG96929A2* STYLE

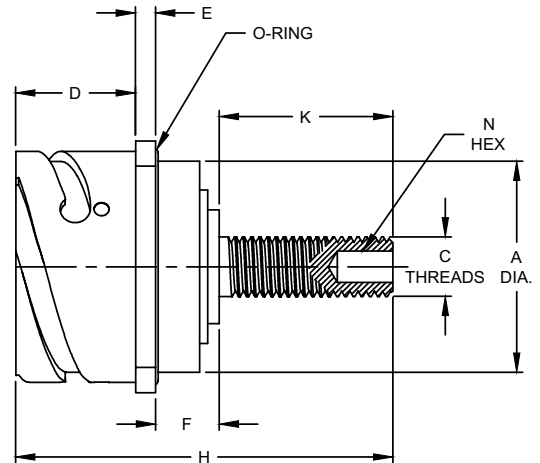
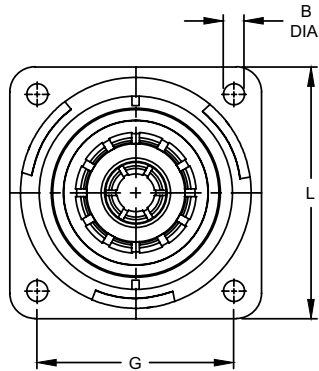
MOUNTING HOLE OPTION



THREADED

MOUNTING HOLE CODES

CODE	MOUNTING HOLE TYPE
None	Thru holes per VG96929
FF	Metric thread
UN	UNC thread



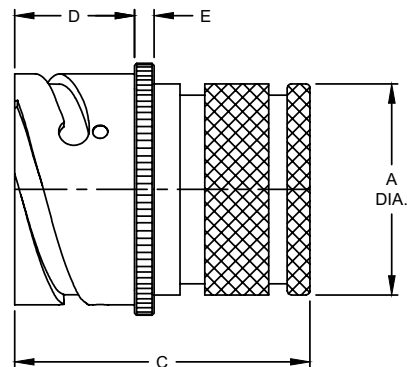
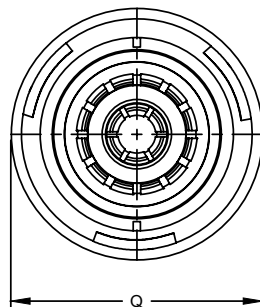
SHELL SIZE	A DIA. ± 0.06 [± 1.5]	B			C	D ± 0.16 [± 0.4]	E ± 0.08 [± 0.2]	F ± 0.060 [± 1.5]		G ± 0.04 [± 0.1]	H MAX.	K ± 0.12 [± 0.3]	L ± 0.12 [± 0.3]	N HEX ± 0.08 [± 0.2]
		METRIC THDS	THRU HOLE	UNC THDS				SPRING CONTACT	CYLINDER CONTACT					
18	1.059 [26.9]	M4	.170 [4.3]	8-32	M8	.907 [23.05]	.157 [4.0]	.472 [12.0]	.472 [12.0]	1.063 [27.0]	2.165 [55.0]	.591 [15.0]	1.378 [35.0]	.118 [3.0]
22	1.307 [33.2]	M4	.170 [4.3]	8-32	M12	.907 [23.05]	.157 [4.0]	.532 [13.5]	.472 [12.0]	1.252 [31.8]	2.598 [66.0]	.984 [25.0]	1.614 [41.0]	.236 [6.0]
28	1.685 [42.8]	M5	.170 [4.3]	10-24	M12	.947 [24.05]	.157 [4.0]	.472 [12.0]	.472 [12.0]	1.563 [39.7]	2.441 [62.0]	.787 [20.0]	2.000 [50.8]	.236 [6.0]
32	1.937 [49.2]	M5	.170 [4.3]	10-24	M16	1.138 [28.90]	.157 [4.0]	.551 [14.0]	.551 [14.0]	1.752 [44.5]	3.071 [78.0]	1.181 [30.0]	2.244 [57.0]	.315 [8.0]

Dimensions in brackets [] are in millimeters.
Mounting holes are metric for VG96929.

IN LINE RECEPTACLE

WITH SHRINK BOOT ADAPTER

SCPB9691G*



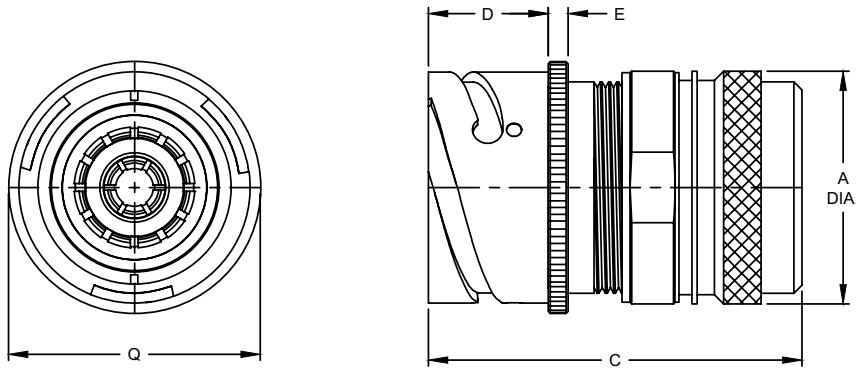
SHELL SIZE	A DIA. MAX.	C ± 0.16 [± 0.4]	D ± 0.12 [± 0.3]	E ± 0.12 [± 0.4]	Q DIA. MAX.
16	.893 [22.7]	1.614 [41.0]	.787 [20.00]	.126 [3.2]	1.240 [31.5]
18	1.118 [28.4]	1.969 [50.0]	.911 [23.15]	.157 [4.0]	1.358 [34.5]
22	1.389 [35.3]	2.126 [54.0]	.911 [23.15]	.157 [4.0]	1.595 [40.5]
28	1.763 [44.8]	2.571 [65.3]	.951 [24.15]	.157 [4.0]	1.969 [50.0]
32	1.952 [49.6]	2.630 [66.8]	1.142 [29.00]	.157 [4.0]	2.224 [56.5]

Dimensions in brackets [] are in millimeters.

IN LINE RECEPTACLE

WITH ADAPTER FOR EMI/RFI BRAID SHIELD & SHRINK BOOT

SCPB9691G2*



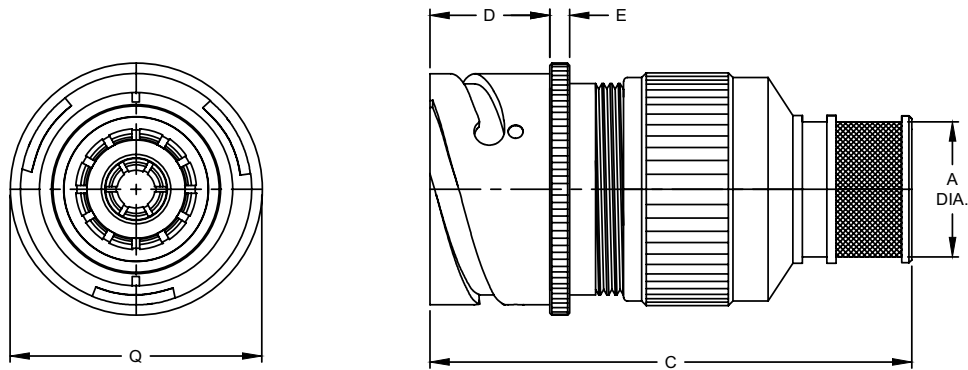
SHELL SIZE	A DIA. MAX.	C MAX.	D ±.012 [±0.3]	E ±.004 [±0.1]	Q DIA. MAX.
16	1.023 [26.0]	2.756 [70.0]	.787 [20.00]	.126 [3.2]	1.240 [31.5]
18	1.260 [32.0]	2.992 [76.0]	.911 [23.15]	.157 [4.0]	1.358 [34.5]
22	1.457 [37.0]	3.366 [86.0]	.911 [23.15]	.157 [4.0]	1.595 [40.5]
28	1.732 [44.0]	3.856 [98.0]	.951 [24.15]	.157 [4.0]	1.969 [50.0]
32	2.031 [51.6]	3.858 [98.0]	1.142 [29.00]	.157 [4.0]	2.224 [56.5]

Dimensions in brackets [] are in millimeters.

IN LINE RECEPTACLE

WITH BANDING ADAPTER

SCPB9691SG*



SHELL SIZE	A DIA. MIN.	C MAX.	D ±.012 [±0.3]	E ±.004 [±0.1]	Q DIA. MAX.
16	.528 [13.4]	2.756 [70.0]	.787 [20.00]	.126 [3.2]	1.240 [31.5]
18	.787 [20.0]	2.992 [76.0]	.911 [23.15]	.157 [4.0]	1.358 [34.5]
22	.945 [24.0]	3.386 [86.0]	.911 [23.15]	.157 [4.0]	1.595 [40.5]
28	1.181 [30.0]	3.858 [98.0]	.951 [24.15]	.157 [4.0]	1.969 [50.0]
32	1.378 [35.0]	3.858 [98.0]	1.142 [29.00]	.157 [4.0]	2.224 [56.5]

Dimensions in brackets [] are in millimeters.

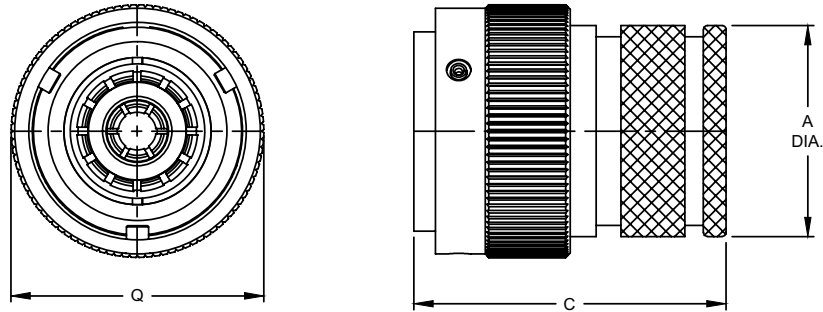


STRAIGHT PLUG

WITH SHRINK BOOT ADAPTER

SCPB9696G*

VG96929G* STYLE



SHELL SIZE	A DIA. MAX.	C MAX.	Q MAX.
16	.893 [22.7]	1.732 [44.0]	1.260 [32.0]
18	1.118 [28.4]	2.087 [53.0]	1.417 [36.0]
22	1.389 [35.3]	2.244 [57.0]	1.697 [43.1]
28	1.763 [44.8]	2.559 [65.0]	2.106 [53.5]
32	1.952 [49.6]	2.559 [65.0]	2.366 [60.1]

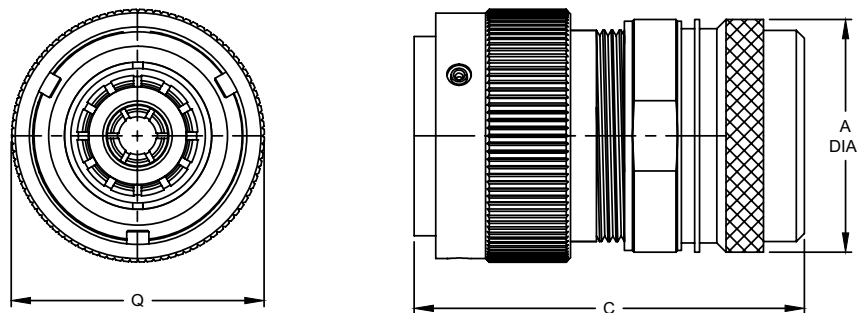
Dimensions in brackets [] are in millimeters.

STRAIGHT PLUG

WITH ADAPTER FOR EMI/RFI BRAID SHIELD & SHRINK BOOT

SCPB9696G2*

VG96929F* STYLE



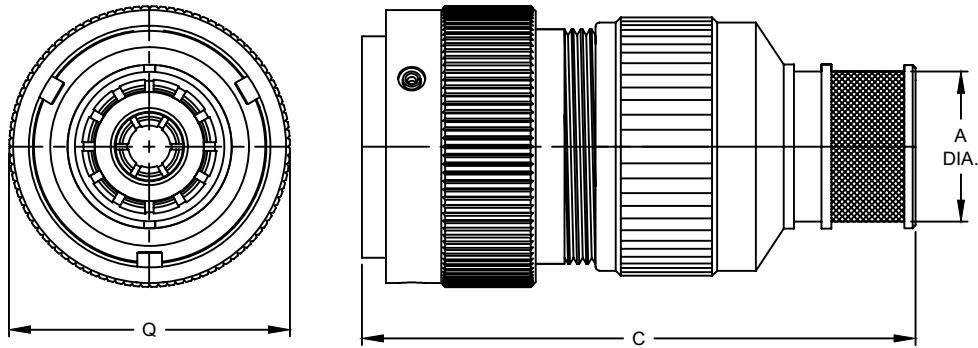
SHELL SIZE	A DIA. MAX.	C MAX.	Q MAX.
16	1.023 [26.0]	2.756 [70.0]	1.260 [32.0]
18	1.260 [32.0]	2.992 [76.0]	1.417 [36.0]
22	1.457 [37.0]	3.366 [86.0]	1.697 [43.1]
28	1.732 [44.0]	3.856 [98.0]	2.106 [53.5]
32	2.031 [51.6]	3.858 [98.0]	2.366 [60.1]

Dimensions in brackets [] are in millimeters.

STRAIGHT PLUG

WITH BANDING ADAPTER

SCPB9696SG*



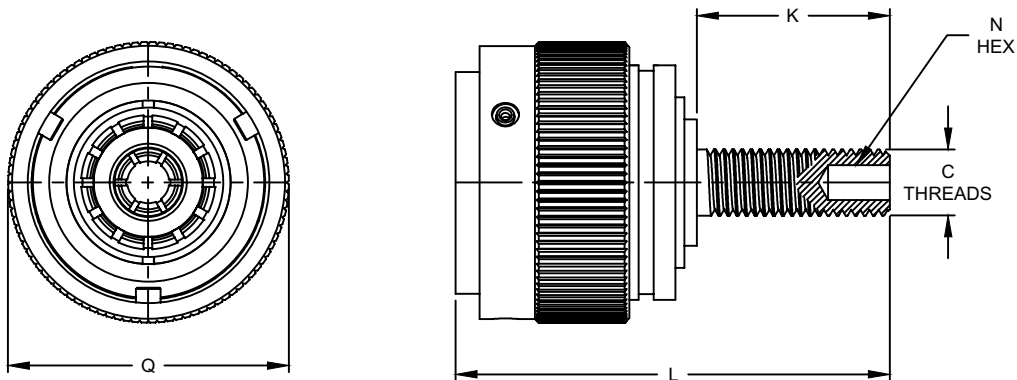
SHELL SIZE	A DIA. MIN.	C MAX.	Q MAX.
16	.528 [13.4]	2.756 [70.0]	1.260 [32.0]
18	.787 [20.0]	2.992 [76.0]	1.417 [36.0]
22	.945 [24.0]	3.386 [86.0]	1.697 [43.1]
28	1.181 [30.0]	3.858 [98.0]	2.106 [53.5]
32	1.378 [35.0]	3.858 [98.0]	2.366 [60.1]

Dimensions in brackets [] are in millimeters.

STRAIGHT PLUG

WITH THREADED CONTACT

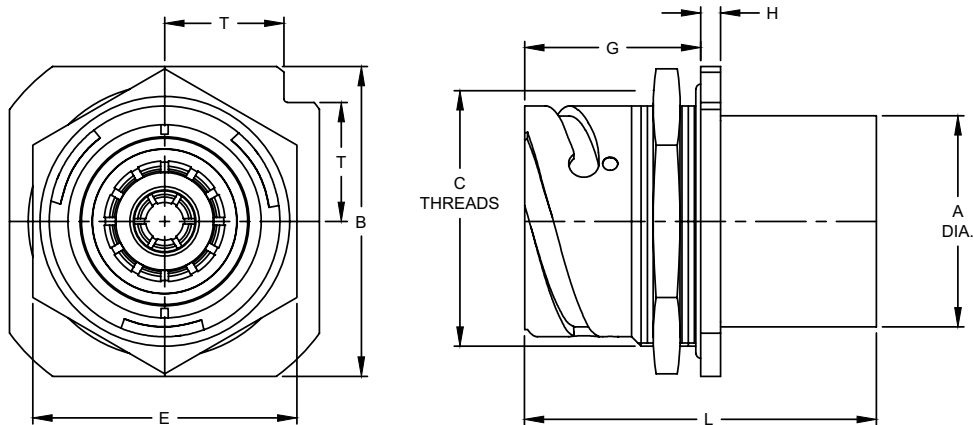
SCPB9696T*



SHELL SIZE	C	K	L	Q MAX.
18	M8	Consult Sales	1.417 [36.0]	
22	M12	Consult Sales	1.697 [43.1]	
28	M12	Consult Sales	2.106 [53.5]	
32	M16	Consult Sales	2.366 [60.1]	

Dimensions in brackets [] are in millimeters.

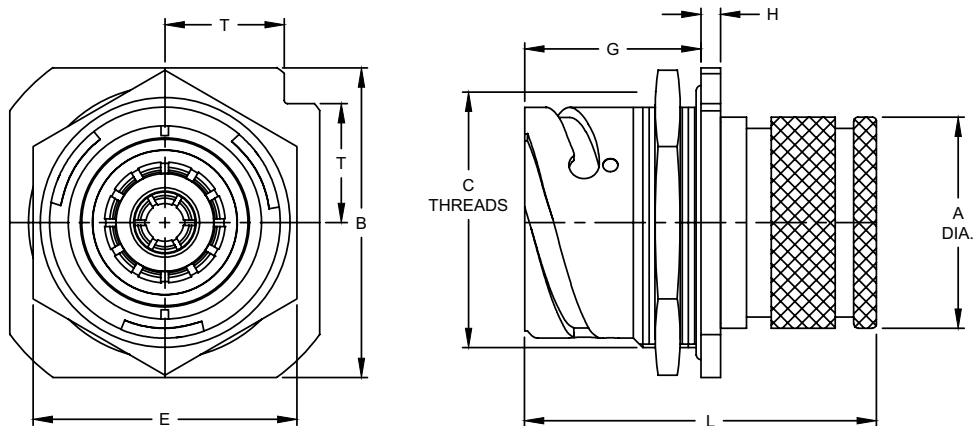
JAM NUT RECEPTACLE SCPB9697E*



SHELL SIZE	A DIA. $\pm 0.006 [\pm 0.15]$	B $\pm 0.012 [\pm 0.3]$	C	E $\pm 0.016 [\pm 0.41]$	G $+0.016/-0.000 [\pm 0.41/-0.0]$	H $\pm 0.008 [\pm 0.2]$	L MAX.	T MAX.
16	.893 [22.7]	1.748 [44.4]	1 1/4-18 UNEF	1.500 [38.1]	1.264 [32.1]	.189 [4.8]	2.500 [63.50]	.618 [15.7]
18	1.063 [27.0]	1.874 [47.6]	1 3/8-18 UNEF	1.563 [39.7]	1.327 [33.7]	.189 [4.8]	2.550 [64.77]	.661 [16.8]
22	1.374 [34.9]	2.252 [57.2]	1 5/8-18 UNEF	1.811 [46.0]	1.327 [33.7]	.189 [4.8]	2.550 [64.77]	.795 [20.2]
28	1.748 [44.4]	2.500 [63.5]	2-18 UNS	2.165 [55.0]	1.386 [35.2]	.220 [5.6]	2.950 [74.93]	.886 [22.5]
32	1.937 [49.2]	2.748 [69.8]	2 1/4-16 UN	2.441 [62.0]	1.386 [35.2]	.220 [5.6]	2.950 [74.93]	.972 [24.7]

Dimensions in brackets [] are in millimeters.

JAM NUT RECEPTACLE WITH SHRINK BOOT ADAPTER SCPB9697G*



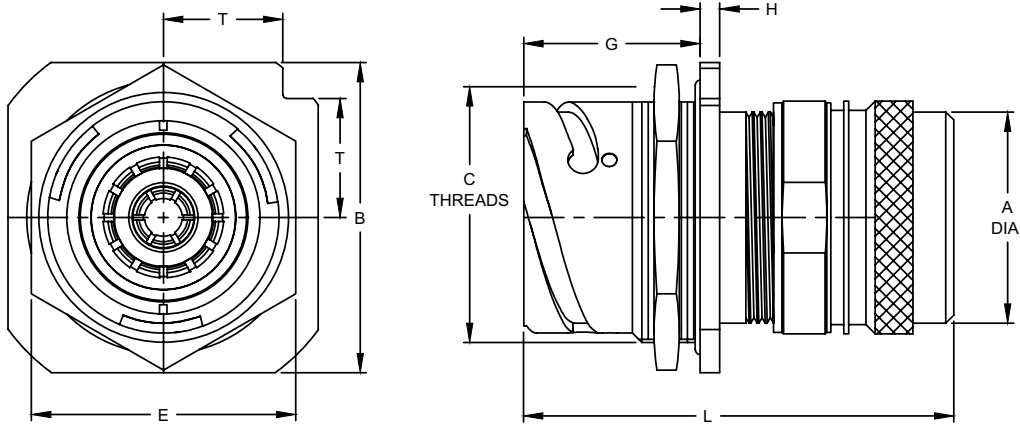
SHELL SIZE	A DIA. MAX.	B $\pm 0.012 [\pm 0.3]$	C	E $\pm 0.016 [\pm 0.41]$	G $+0.016/-0.000 [\pm 0.41/-0.0]$	H $\pm 0.008 [\pm 0.2]$	L MAX.	T MAX.
16	1.023 [26.0]	1.748 [44.4]	1 1/4-18 UNEF	1.500 [38.1]	1.264 [32.1]	.189 [4.8]	2.500 [63.50]	.618 [15.7]
18	1.260 [32.0]	1.874 [47.6]	1 3/8-18 UNEF	1.563 [39.7]	1.327 [33.7]	.189 [4.8]	2.550 [64.77]	.661 [16.8]
22	1.457 [37.0]	2.252 [57.2]	1 5/8-18 UNEF	1.811 [46.0]	1.327 [33.7]	.189 [4.8]	2.550 [64.77]	.795 [20.2]
28	1.732 [44.0]	2.500 [63.5]	2-18 UNS	2.165 [55.0]	1.386 [35.2]	.220 [5.6]	2.950 [74.93]	.886 [22.5]
32	2.031 [51.6]	2.748 [69.8]	2 1/4-16 UN	2.441 [62.0]	1.386 [35.2]	.220 [5.6]	2.950 [74.93]	.972 [24.7]

Dimensions in brackets [] are in millimeters.

JAM NUT RECEPTACLE

WITH ADAPTER FOR EMI/RFI BRAID SHIELD & SHRINK BOOT

SCPB9697G*



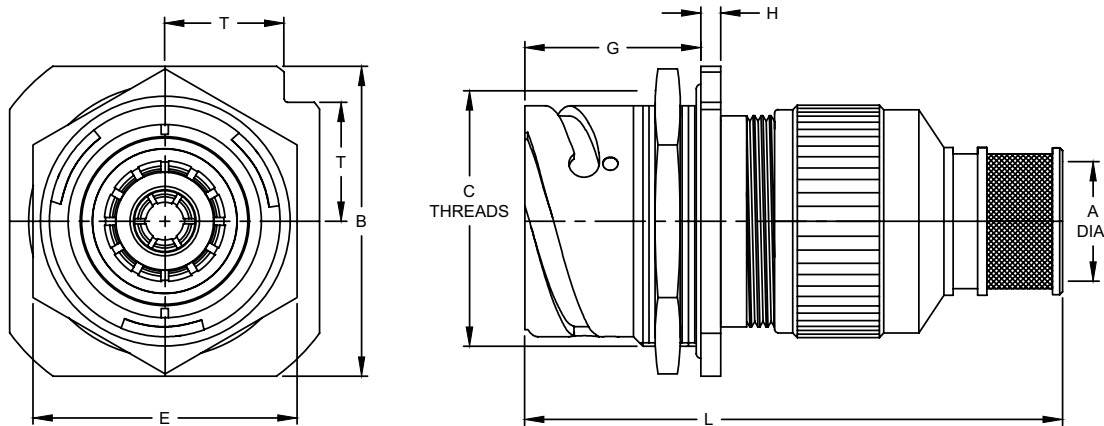
SHELL SIZE	A DIA. MAX.	B ±0.12 [± 0.3]	C	E ±0.16 [±0.41]	G +.016/-0.000 [±0.41/-0.0]	H ±.008 [±0.2]	L MAX.	T MAX.
16	1.023 [26.0]	1.748 [44.4]	1 1/4-18 UNEF	1.500 [38.1]	1.264 [32.1]	.189 [4.8]	2.756 [70.0]	.618 [15.7]
18	1.260 [32.0]	1.874 [47.6]	1 3/8-18 UNEF	1.563 [39.7]	1.327 [33.7]	.189 [4.8]	2.992 [76.0]	.661 [16.8]
22	1.457 [37.0]	2.252 [57.2]	1 5/8-18 UNEF	1.811 [46.0]	1.327 [33.7]	.189 [4.8]	3.386 [86.0]	.795 [20.2]
28	1.732 [44.0]	2.500 [63.5]	2-18 UNS	2.165 [55.0]	1.386 [35.2]	.220 [5.6]	3.858 [98.0]	.886 [22.5]
32	2.031 [51.6]	2.748 [69.8]	2 1/4-16 UN	2.441 [62.0]	1.386 [35.2]	.220 [5.6]	3.858 [98.0]	.972 [24.7]

Dimensions in brackets [] are in millimeters.

JAM NUT RECEPTACLE

WITH BANDING ADAPTER

SCPB9697SG*



SHELL SIZE	A DIA. MIN.	B ±0.12 [±0.3]	C	E ±0.16 [±0.41]	G +.016/-0.000 [±0.41/-0.0]	H ±.008 [±0.2]	L MAX.	T MAX.
16	.528 [13.4]	1.748 [44.4]	1 1/4-18 UNEF	1.500 [38.1]	1.264 [32.1]	.189 [4.8]	2.756 [70.0]	.618 [15.7]
18	.787 [20.0]	1.874 [47.6]	1 3/8-18 UNEF	1.563 [39.7]	1.327 [33.7]	.189 [4.8]	2.992 [76.0]	.661 [16.8]
22	.945 [24.0]	2.252 [57.2]	1 5/8-18 UNEF	1.811 [46.0]	1.327 [33.7]	.189 [4.8]	3.386 [86.0]	.795 [20.2]
28	1.181 [30.0]	2.500 [63.5]	2-18 UNS	2.165 [55.0]	1.386 [35.2]	.220 [5.6]	3.858 [98.0]	.886 [22.5]
32	1.378 [35.0]	2.748 [69.8]	2 1/4-16 UN	2.441 [62.0]	1.386 [35.2]	.220 [5.6]	3.858 [98.0]	.972 [24.7]

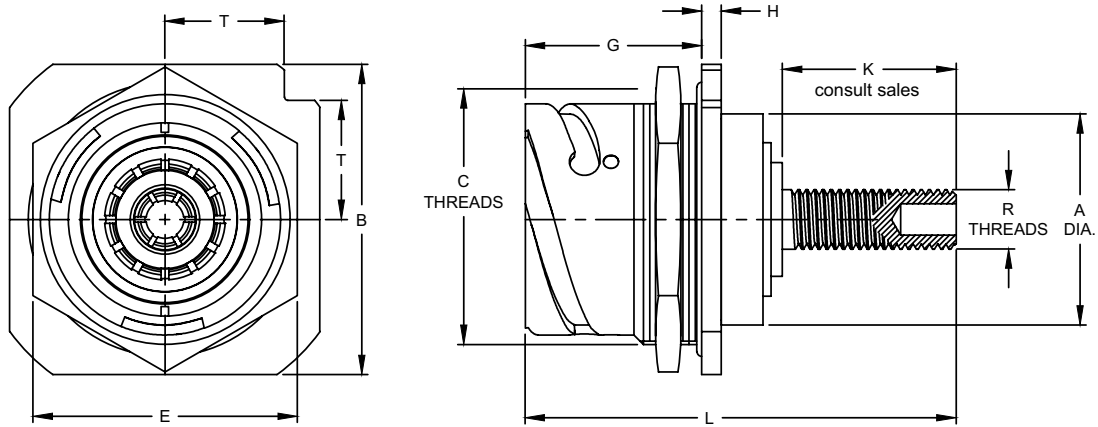
Dimensions in brackets [] are in millimeters.



JAM NUT RECEPTACLE

WITH THREADED CONTACTS

SCPB9697T*



SHELL SIZE	A DIA. ± 0.06 [± 0.15]	B ± 0.12 [± 0.3]	C	E ± 0.16 [± 0.41]	G $+0.016/-0.000$ [$\pm 0.41/-0.0$]	H ± 0.008 [± 0.2]	L MAX.	T MAX.	R
16	CONSULT SALES	1.748 [44.4]	1 1/4-18 UNEF	1.500 [38.1]	1.264 [32.1]	.189 [4.8]	CONSULT SALES	.618 [15.7]	M8
18	1.059 [26.9]	1.874 [47.6]	1 3/8-18 UNEF	1.563 [39.7]	1.327 [33.7]	.189 [4.8]	CONSULT SALES	.661 [16.8]	M8
22	1.307 [33.2]	2.252 [57.2]	1 5/8-18 UNEF	1.811 [46.0]	1.327 [33.7]	.189 [4.8]	CONSULT SALES	.795 [20.2]	M12
28	1.685 [42.8]	2.500 [63.5]	2-18 UNS	2.165 [55.0]	1.386 [35.2]	.220 [5.6]	CONSULT SALES	.886 [22.5]	M12
32	1.937 [49.2]	2.748 [69.8]	2 1/4-16 UN	2.441 [62.0]	1.386 [35.2]	.220 [5.6]	CONSULT SALES	.972 [24.7]	M16

Dimensions in brackets [] are in millimeters.

THRU BULKHEAD RECEPTACLE

SCPB9699K*

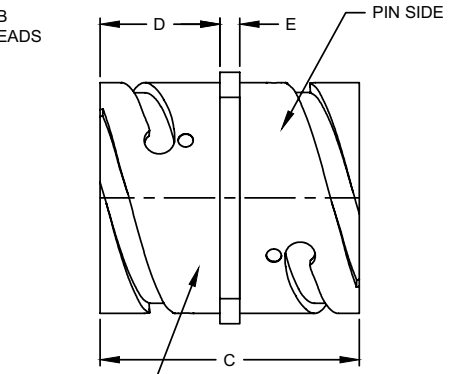
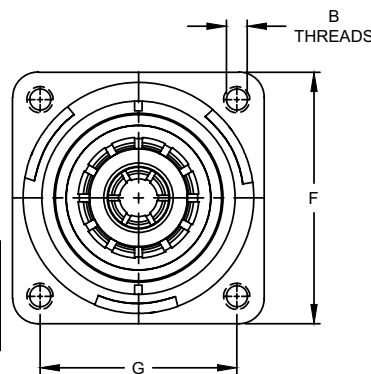
MOUNTING HOLE OPTION



THREADED

MOUNTING HOLE CODES

CODE	MOUNTING HOLE TYPE
None	Thru holes per VG96929
FF	Metric thread
UN	UNC thread



Consult sales for Pin to Pin and Socket to Socket Receptacles

SEE PAGE IV FOR ORDERING INFORMATION

SHELL SIZE	B			C ± 0.12 [± 0.3]	D ± 0.12 [± 0.3]	E ± 0.04 [± 0.1]	F ± 0.12 [± 0.3]	G ± 0.04 [± 0.1]
	METRIC THDS	THRU HOLE	UNC THDS					
16	M4	.170 [4.3]	8-32	1.614 [41.0]	.787 [20.00]	.126 [3.2]	1.280 [32.5]	.969 [24.6]
18	M4	.170 [4.3]	8-32	1.969 [50.0]	.911 [23.15]	.157 [4.0]	1.378 [35.0]	1.063 [27.0]
22	M4	.170 [4.3]	8-32	1.969 [50.0]	.911 [23.15]	.157 [4.0]	1.614 [41.0]	1.252 [31.8]
28	M5	.209 [5.3]	10-24	2.052 [52.1]	.951 [24.15]	.157 [4.0]	2.000 [50.8]	1.563 [39.7]
32	M5	.209 [5.3]	10-24	2.434 [61.8]	1.142 [29.00]	.157 [4.0]	2.244 [57.0]	1.752 [44.5]

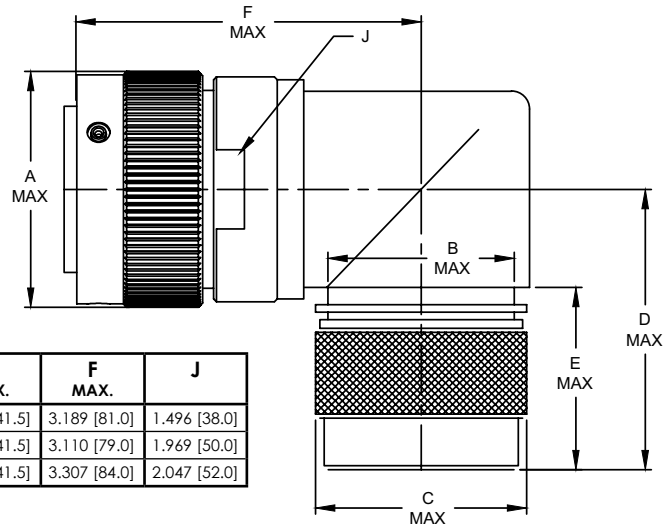
Dimensions in brackets [] are in millimeters.

90 DEGREE PLUG

WITH ADAPTER FOR EMI/RFI BRAID SHIELD & SHRINK BOOT

SCPB9698G2*

VG96929E* STYLE

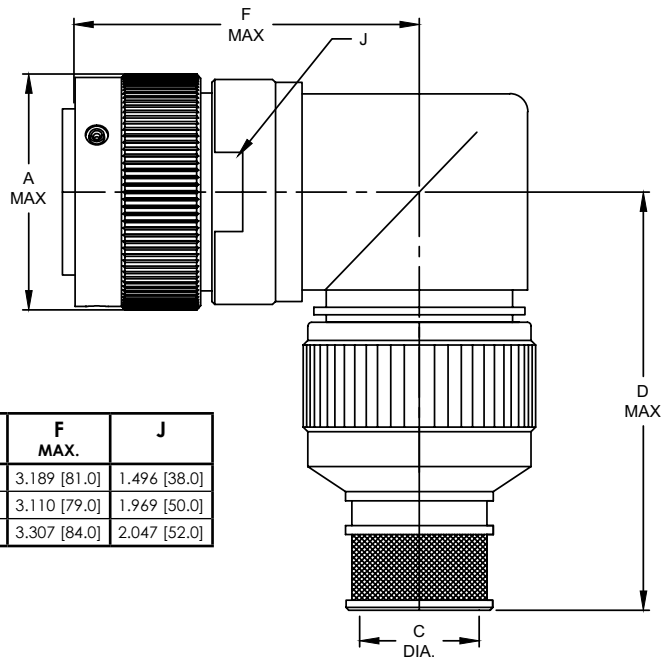


SHELL SIZE	A MAX.	B MAX.	C MAX.	D MAX.	E MAX.	F MAX.	J
22	1.697 [43.1]	1.535 [39.0]	1.673 [42.5]	2.244 [57.0]	1.639 [41.5]	3.189 [81.0]	1.496 [38.0]
28	2.106 [53.5]	1.720 [43.7]	1.890 [48.0]	2.283 [58.0]	1.639 [41.5]	3.110 [79.0]	1.969 [50.0]
32	2.366 [60.1]	1.913 [48.6]	2.067 [52.5]	2.559 [65.0]	1.639 [41.5]	3.307 [84.0]	2.047 [52.0]

Dimensions in brackets [] are in millimeters.

90 DEGREE PLUG WITH BANDING ADAPTER

SCPB9698SG*

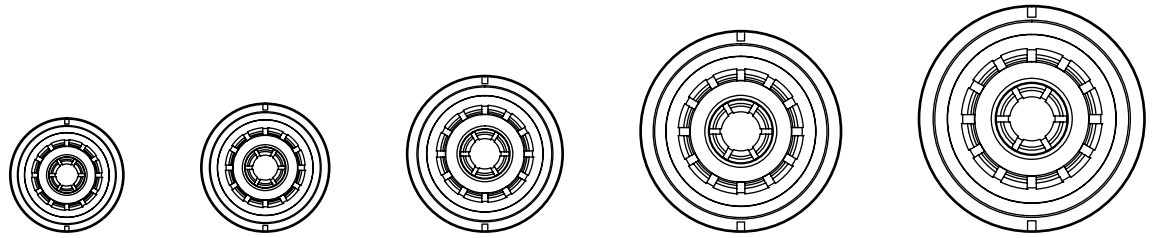


SHELL SIZE	A MAX.	C MIN.	D MAX.	F MAX.	J
22	1.697 [43.1]	.945 [24.0]	3.228 [82.0]	3.189 [81.0]	1.496 [38.0]
28	2.106 [53.5]	1.161 [30.0]	3.268 [83.0]	3.110 [79.0]	1.969 [50.0]
32	2.366 [60.1]	1.378 [35.0]	3.425 [87.0]	3.307 [84.0]	2.047 [52.0]

Dimensions in brackets [] are in millimeters.



INSERT ARRANGEMENTS

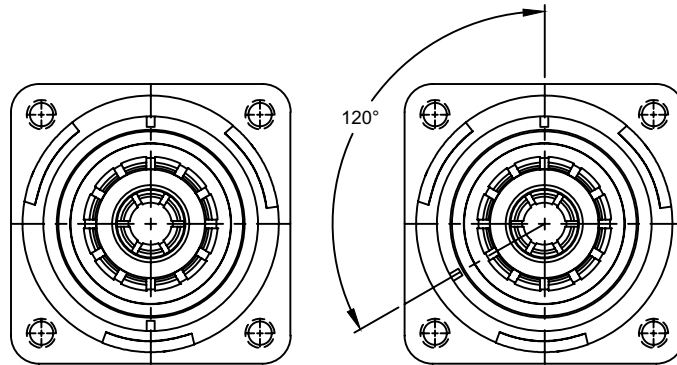


	16	18	22	28	32
WIRE SIZE mm²	25	50	95	150	240
AMPS	250	350	570	750	1000

INSERT ARRANGEMENTS KEYWAY POSITION (POLARIZATION)

To avoid mismatching of similar connectors, SCPB969 connectors are available with key way in two different positions: Normal and "W".

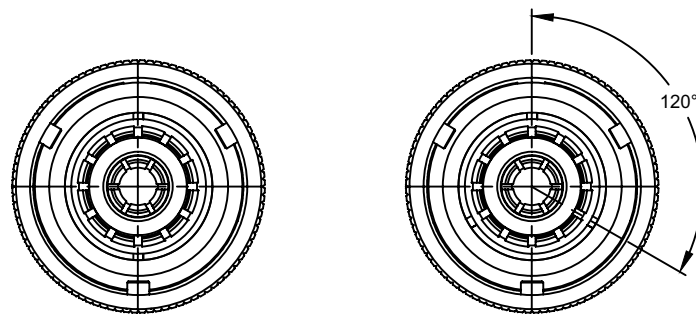
RECEPTACLE MATING SIDE



STANDARD KEY (180°)

"W" POSITION KEY (120°)

PLUG MATING SIDE



STANDARD KEY (180°)

"W" POSITION KEY (120°)

CRIMP CONTACTS

PIN CONTACT

R69 - 18 50-110

SERIES PREFIX

R69 SCPB969 Crimp Pin Contact.

SHELL SIZE

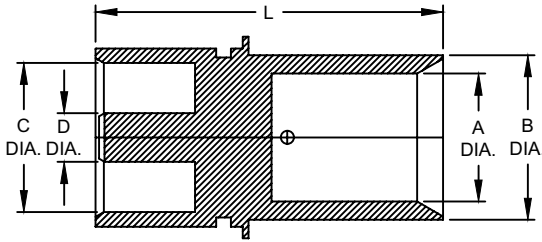
See Table Below.

CRIMP WIRE SIZE

See Table Below.

MATERIAL / FINISH

- 110** Copper Alloy, Silver Plated.
- 140** Copper Alloy, Light Gold (0.000010) Plated.
- 143** Copper Alloy, Heavy Gold (0.000050) Plated.



WIRE SIZE mm ²	SHELL SIZE	A +.012/-0.000 [+0.3/-0.0]	B ±.008 [±0.2]	C	D	L REF.
25	16	.303 [7.7]	.429 [10.9]	.412 [10.45]	.136 [3.45]	1.485 [37.8]
50	18	.441 [11.2]	.630 [16.0]	.490 [12.45]	.175 [4.45]	1.825 [46.4]
95	22	.638 [16.2]	.827 [21.0]	.687 [17.45]	.254 [6.45]	1.910 [20.5]
150	28	.823 [20.9]	1.063 [27.0]	.959 [24.35]	.313 [7.95]	2.235 [56.8]
240	32	1.055 [26.8]	1.244 [31.6]	1.197 [30.40]	.451 [11.45]	2.235 [56.8]

Dimensions in brackets [] are in millimeters.

SOCKET CONTACT

T69 - 18 50-110

SERIES PREFIX

T69 SCPB969 Crimp Socket Contact.

SHELL SIZE

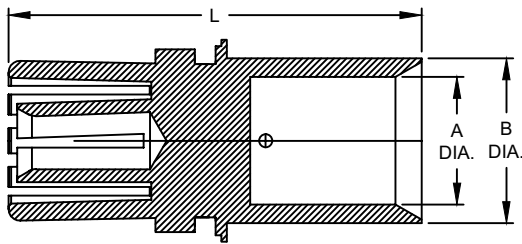
See Table Below.

CRIMP WIRE SIZE

See Table Below.

MATERIAL / FINISH

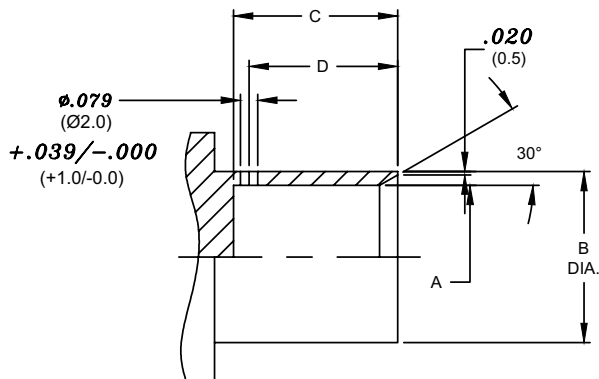
- 110** Copper Alloy, Silver Plated.
- 140** Copper Alloy, Light Gold (0.000010) Plated.
- 143** Copper Alloy, Heavy Gold (0.000050) Plated.



WIRE SIZE mm ²	SHELL SIZE	A +.012/-0.000 [+0.3/-0.0]	B ±.008 [±0.2]	L REF.
25	16	.303 [7.7]	.429 [10.9]	1.485 [37.8]
50	18	.441 [11.2]	.630 [16.0]	1.825 [46.4]
95	22	.638 [16.2]	.827 [21.0]	1.910 [20.5]
150	28	.823 [20.9]	1.063 [27.0]	2.235 [56.8]
240	32	1.055 [26.8]	1.244 [31.6]	2.235 [56.8]

Dimensions in brackets [] are in millimeters.

CRIMP DIMENSIONS



CONTACT SIZE	SHELL SIZE	A +.012/-0.000 [+0.3/-0.0]	B ±.008 [±0.2]	C ±.008 [±0.2]	D
25	16	.303 [7.7]	.429 [10.9]	.551 [14.0]	.433 [11.0]
50	18	.441 [11.2]	.630 [16.0]	.591 [15.0]	.512 [13.0]
95	22	.638 [16.2]	.827 [21.0]	.807 [20.5]	.728 [18.5]
150	28	.823 [20.9]	1.063 [27.0]	1.102 [28.0]	1.004 [25.5]
240	32	1.055 [26.8]	1.244 [31.6]	1.181 [30.0]	1.063 [27.0]

Dimensions in brackets [] are in millimeters.



THREADED CONTACTS PIN CONTACT

Z69 - 18 00-110

SERIES PREFIX
Z69 SCPB69 Threaded Pin Contact.

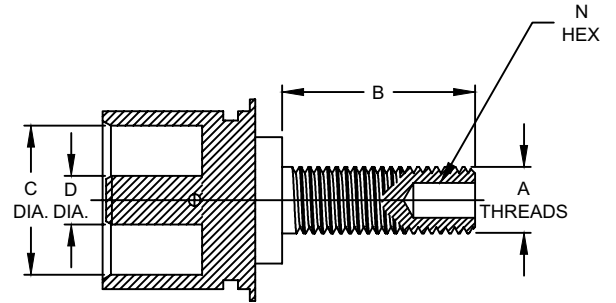
SHELL SIZE
See Table Below.

SHELL TYPE
00 Wall mount Receptacle.
06 Straight Plug.
07 Jam nut Receptacle.

MATERIAL / FINISH
110 Copper Alloy, Silver Plated.
140 Copper Alloy, Light Gold (0.000010) Plated.
143 Copper Alloy, Heavy Gold (0.000050) Plated.

SHELL SIZE	A	B ±.012 [±0.3]	C	D	N HEX ±.008 [±0.2]
16	CONSULT SALES		.412 [10.45]	.136 [3.45]	.118 [3.0]
18	M8	.591 [15.0]	.490 [12.45]	.175 [4.45]	.118 [3.0]
22	M12	.984 [25.0]	.687 [17.45]	.254 [6.45]	.236 [6.0]
28	M12	.787 [20.0]	.959 [24.35]	.313 [7.95]	.236 [6.0]
32	M16	1.181 [30.0]	1.797 [30.40]	.451 [11.45]	.315 [8.0]

Dimensions in brackets [] are in millimeters.



SOCKET CONTACT

F69 - 18 50-110

SERIES PREFIX
F69 SCPB69 Threaded Socket Contact.

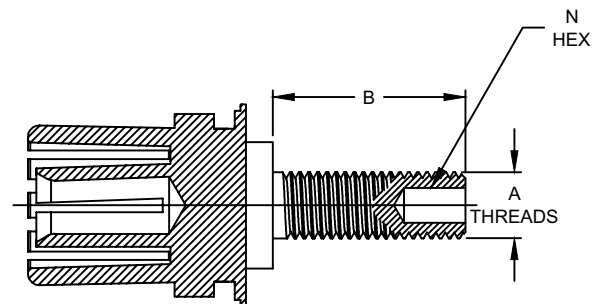
SHELL SIZE
See Table Below.

SHELL TYPE
00 Panel mount Receptacle.
06 Straight Plug.
07 Jam nut Receptacle.

MATERIAL / FINISH
110 Copper Alloy, Silver Plated.
140 Copper Alloy, Light Gold (0.000010) Plated.
143 Copper Alloy, Heavy Gold (0.000050) Plated.

SHELL SIZE	A	B ±.012 [±0.3]	N HEX ±.008 [±0.2]
16	CONSULT SALES		.118 [3.0]
18	M8	.591 [15.0]	.118 [3.0]
22	M12	.984 [25.0]	.236 [6.0]
28	M12	.787 [20.0]	.236 [6.0]
32	M16	1.181 [30.0]	.315 [8.0]

Dimensions in brackets [] are in millimeters.



DUST CAP FOR PLUG

DCP19

DCP 19 A 20 S C 08 - 04

DUST CAP STYLE
 DCP Dust cap for plug.
 DCR Dust cap for receptacle.

MATING CONNECTOR SERIES CODE

FINISH
 See Table I on Page 1K-16.

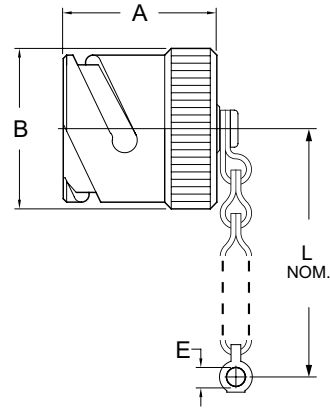
SHELL SIZE
 See Tables below.

END FITTING DESIGNATION
 See Tables IV & V on Page 1K-16.

LENGTH OF ATTACHMENT ($\pm .250$)
 Designate in 1/2" increments
 (Always use two digits. i.e.,
 08=4 inches, 12=6 inches, etc.)

ATTACHMENT CODE
 See Table II on Page 1K-16.

GASKET MATERIAL
 See Table III on Page 1K-16.



FOR PLUGS
 SCPB 9696* & 9698*

SHELL SIZE	A MAX.	B MAX.	L $\pm .500$ [± 12.7]	$\text{\O}E$ $+ .02 - .01$ [$+0.5 - 0.25$]
16	1.457 [37.0]	1.181 [30.0]	5.00 [127.0]	.173 [4.4]
18	1.457 [37.0]	1.319 [33.5]	5.50 [139.7]	.173 [4.4]
22	1.457 [37.0]	1.575 [40.0]	5.50 [139.7]	.189 [4.8]
28	1.457 [37.0]	1.949 [49.5]	8.25 [209.6]	.189 [4.8]
32	1.457 [37.0]	2.205 [56.0]	8.25 [209.6]	.220 [5.6]

Dimensions in brackets [] are in millimeters.

MATERIAL:
 Chain - Stainless steel

DUST CAP FOR RECEPTACLE

DCR19

DCR 19 A 20 S C 08 - 04

DUST CAP STYLE
 DCP Dust cap for plug.
 DCR Dust cap for receptacle.

MATING CONNECTOR SERIES CODE

FINISH
 See Table I on Page 1K-16.

SHELL SIZE
 See Tables below.

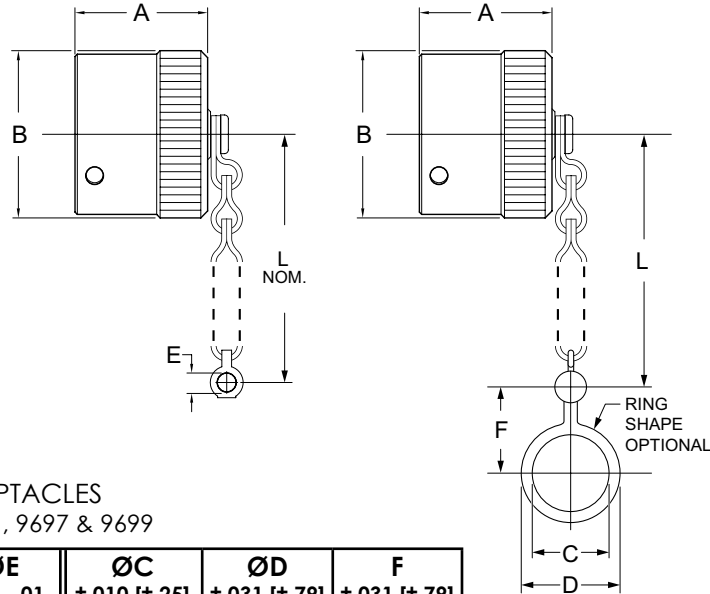
END FITTING DESIGNATION
 See Tables IV & V on Page 1K-16.

LENGTH OF ATTACHMENT ($\pm .250$)
 Designate in 1/2" increments
 (Always use two digits. i.e.,
 08=4 inches, 12=6 inches, etc.)

ATTACHMENT CODE
 See Table II on Page 1K-16.

GASKET MATERIAL
 See Table III on Page 1K-16.

MATERIAL:
 Cap - Aluminum alloy
 Chain - Stainless steel

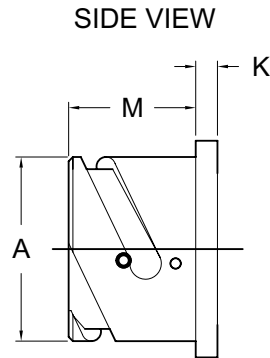
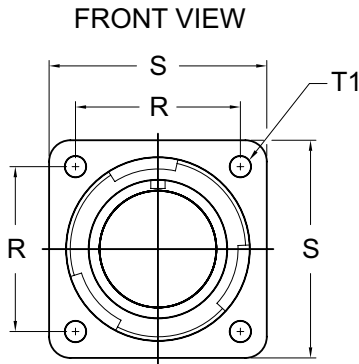
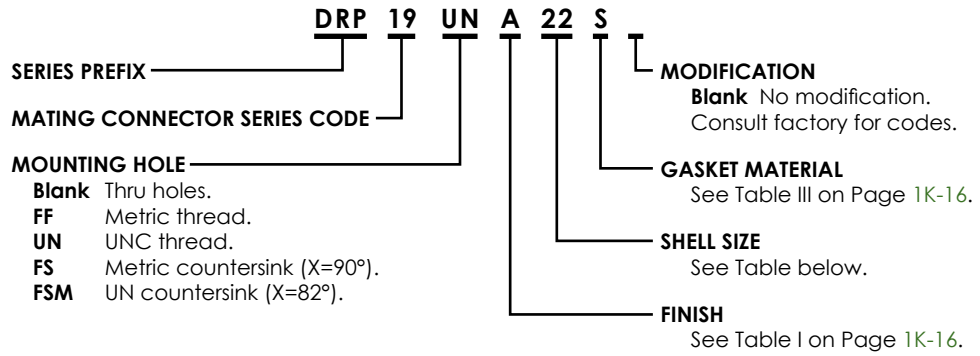


FOR RECEPTACLES
 SCPB 9690, 9691, 9697 & 9699

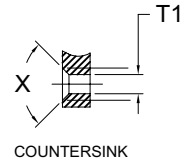
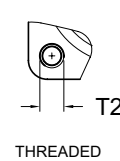
SHELL SIZE	A MAX.	B MAX.	L $\pm .500$ [± 12.7]	$\text{\O}E$ $+ .02 - .01$ [$+0.5 - 0.25$]	$\text{\O}C$ $\pm .010$ [$\pm .25$]	$\text{\O}D$ $\pm .031$ [$\pm .79$]	F $\pm .031$ [$\pm .79$]
16	.984 [25.0]	1.299 [33.0]	4.843 [123]	.173 [4.4]	1.266 [32.16]	1.641 [41.68]	1.070 [27.18]
18	.984 [25.0]	1.476 [37.5]	4.843 [123]	.173 [4.4]	1.391 [35.33]	1.766 [44.86]	1.132 [28.75]
22	.984 [25.0]	1.732 [44.0]	4.843 [123]	.173 [4.4]	1.641 [41.68]	2.015 [51.18]	1.417 [35.99]
28	.984 [25.0]	2.146 [54.5]	8.110 [206]	.220 [5.6]	2.078 [52.78]	2.453 [62.31]	1.476 [37.49]
32	.984 [25.0]	2.402 [61.0]	8.110 [206]	.220 [5.6]	2.265 [57.53]	2.645 [67.18]	1.635 [41.53]

Dimensions in brackets [] are in millimeters.





MOUNTING HOLE OPTIONS AVAILABLE FOR DRP SERIES



ENVIRONMENTAL WHEN USED WITH A FLANGE
SEALING GASKET SCP36675 OR SCP4050

SHELL SIZE	FRONT VIEW					SIDE VIEW		
	R ±.004 [±0.1]	S ±.012 [±0.3]	T1 +.004 -.000 [+0.1 -0.0]	T2 THREAD		A +.000 -.006 [+0.00 -0.15]	K ±.008 [±0.2]	M +.016 -.000 [+0.4 -0.0]
				METRIC	UNC			
16	.969 [24.6]	1.280 [32.5]	.126 [3.2]	M4	8-32UNC	1.079 [27.4]	.126 [3.2]	.748 [19.0]
18	1.063 [27.0]	1.378 [35.0]	.126 [3.2]	M4	8-32UNC	1.213 [30.8]	.157 [4.0]	.748 [19.0]
22	1.252 [31.8]	1.614 [41.0]	.126 [3.2]	M4	8-32UNC	1.472 [37.4]	.157 [4.0]	.748 [19.0]
28	1.563 [39.7]	2.000 [50.8]	.146 [3.7]	M5	10-24UNC	1.839 [46.7]	.157 [4.0]	.811 [20.6]
32	1.752 [44.5]	2.244 [57.0]	.169 [4.3]	M5	1/4-20UNC	2.102 [53.4]	.157 [4.0]	.874 [22.2]

Dimensions in brackets [] are in millimeters.

DUST CAPS & DUMMY RECEPTACLES

FINISH, ATTACHMENT & GASKET CODES

TABLE I. FINISH CODES

CONSULT FACTORY FOR OTHER AVAILABLE FINISHES

Spacecraft Code	Finish	Specification(s)
H	Anodize, Black	AMS-A-8625, Type II, Class 2
B	Cadmium Plate, Black	AMS-QQ-P-416, Type II, Class 3
X	Cadmium Plate, Bright Over Electroless Nickel	AMS-QQ-P-416, Type I, Class 3 ASTMB 733-90, SC2, Type I, Class 5 over AMS-C-26074, Class 4, Grade B
E	Cadmium Plate, Gold Iridite, Over Electroless Nickel	MIL-C-5541, Class 3 AMS-QQ-P-416, Type II, Class 3 over AMS-C-26074, Class 4, Grade B
C	Cadmium Plate, Olive Drab	AMS-QQ-P-416, Type II, Class 3, 48 Hours
A	Cadmium Plate, Olive Drab Over Electroless Nickel	1000 Hour Corrosion Resistance
N	Electroless Nickel	AMS-C-26074, Class 4, Grade B
L	Zinc Cobalt, Dark Olive Drab	96 Hour Corrosion Resistance
P	Passivated, Stainless Steel	AMS-QQ-P-35
T	Nickel, Fluorocarbon Polymer	500 Hour Corrosion Resistance
W	Zinc Nickel, Black	ASTM B841 Type D

TABLE II. ATTACHMENT CODES

Attachment Code	Description
A	No Attachment Required
B	Bead Chain, Brass, Nickel Plated
C	Sash Chain, SST, Passivated
D	Bead Chain, SST, Passivated
E	Bead Chain, Brass, Cadmium, Olive Drab Plated
F	Bead Chain, Brass, Unfinished
I	Bead Chain, Brass, Black Oxide Finish
N	Wire Rope, No Jacket
P	Wire Rope, Polyurethane Jacket with Terminal
R	Wire Rope, SST, PVC Covered, Green Color
T	Wire Rope, SST, Teflon Covered, Natural Cover
U	Wire Rope, SST, Nylon Covered, Brown Color
V	Wire Rope, SST, Viton Covered, Black Color
W	Nylon Cord, Green Color, SST Terminal

TABLE III. GASKET MATERIAL CODES

Material Code	Material Description
A	Fluorosilicone, Blue
N	Neoprene, Black, MIL-R-3065
O	None Required
S	Silicone, Red, ZZ-R-765
C	Conductive Silicone

TABLE IV. EYELET END FITTING STYLES AND SIZES (NOT USED WITH ATTACHMENT CODE A)

Dash No. Code	Y Ref. Dia.
00	No Eyelet
01	.125
02	.141
03	.167
04	.188
05	.219
06	.250
07	.156
08	.121

USED WITH ATTACHMENT CODES:

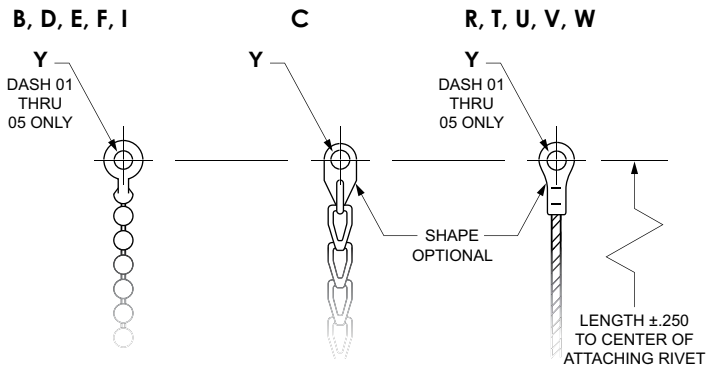
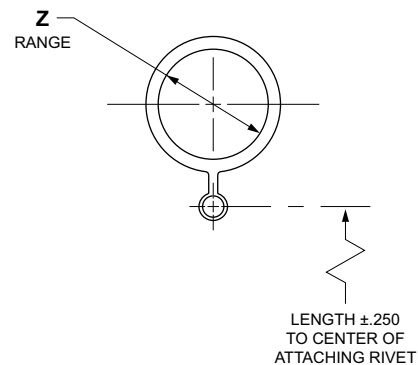


TABLE V. RING END FITTING SIZES (NOT USED WITH ATTACHMENT CODE A)

Z RANGE	DASH NO. CODE	Z RANGE	DASH NO. CODE	Z RANGE	DASH NO. CODE
.401 - .391	33	1.276 - 1.266	42	2.088 - 2.078	47
.454 - 444	34	1.322 - 1.302	17	2.151 - 2.141	25
.464 - .454	35	1.401 - 1.391	43	2.275 - 2.265	48
.526 - .516	36	1.448 - 1.428	18	2.276 - 2.266	26
.604 - .584	11	1.546 - 1.536	44	2.338 - 2.328	27
.651 - .641	37	1.572 - 1.552	19	2.401 - 2.391	28
.729 - .709	12	1.651 - 1.641	45	2.520 - 2.510	49
.885 - .865	13	1.698 - 1.678	20	2.526 - 2.516	29
.906 - .896	40	1.776 - 1.766	46	2.651 - 2.641	30
.948 - .918	14	1.822 - 1.802	21	2.901 - 2.891	31
1.072 - 1.052	15	1.948 - 1.928	22	3.026 - 3.016	32
1.151 - 1.141	41	2.026 - 2.016	23		
1.198 - 1.178	16	2.088 - 2.078	24		

USED WITH ATTACHMENT CODES: B THRU W



GASKETS FOR FLANGE MOUNT RECEPTACLES

SCP40450, SCP40460

For Reverse Bayonet Coupling

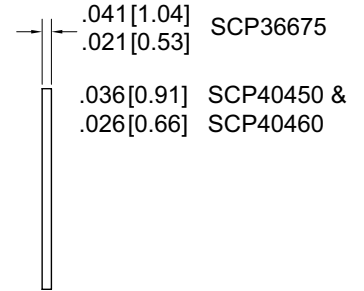
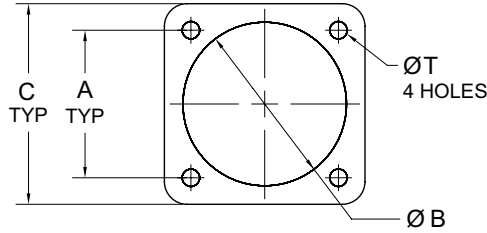
SCP40450 - 20 H

PART NUMBER ————

SHELL SIZE ————

MATERIAL ————

BLANK Neoprene 80 shore.
F Silicone.
FS Silicone with shielded wire mesh.
H Halogen-free.
S Shielded, wire mesh.

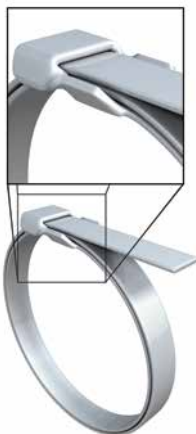


REVERSE BAYONET SHELL TYPES: FRONT PANEL MOUNT								
REVERSE BAYONET SHELL TYPES: SCPB03*, SCPB030* REAR PANEL MOUNT								
		PART NUMBER (-67°F to -278°F)	PART NUMBER (0°F to +257°F) NOTE 2	A ±.010	B +.016 -.000	C +.016 -.000	ØT ±.010	ALTERNATE PART #
16	-	SCP36675-16	SCP40450-16	.969 [24.60]	1.000 [25.40]	1.281 [32.54]	.172 [4.37]	930-1690-XXX
-	16	-	SCP40460-16	.969 [24.60]	1.081 [27.40]	1.281 [32.54]	.172 [4.37]	930-1691-XXX
18	-	SCP36675-18	SCP40450-18	1.062 [27.00]	1.125 [28.58]	1.375 [34.93]	.203 [5.16]	930-1890-XXX
-	18	-	SCP40460-18	1.062 [27.00]	1.213 [30.80]	1.375 [34.93]	.203 [5.16]	930-1891-XXX
22	-	SCP36675-22	SCP40450-22	1.250 [31.75]	1.375 [34.93]	1.625 [41.28]	.203 [5.16]	930-2290-XXX
-	22	-	SCP40460-22	1.250 [31.75]	1.472 [37.40]	1.625 [41.28]	.203 [5.16]	930-2291-XXX
28	-	SCP36675-28	SCP40450-28	1.563 [39.70]	1.750 [44.45]	2.000 [50.80]	.203 [5.16]	930-2890-XXX
-	28	-	SCP40460-28	1.563 [39.70]	1.840 [46.70]	2.000 [50.80]	.203 [5.16]	930-2891-XXX
32	-	SCP36675-32	SCP40450-32	1.750 [44.45]	2.000 [50.80]	2.250 [57.15]	.219 [5.56]	930-3290-XXX
-	32	-	SCP40460-32	1.750 [44.45]	2.102 [53.40]	2.250 [57.15]	.219 [5.56]	930-3291-XXX

1. Dimensions in brackets [] are in millimeters.
2. For shielding add "S" after the part number.
3. For silicone material add "FS" after part number

MINI-BANDS .115 WIDE

M85049/128



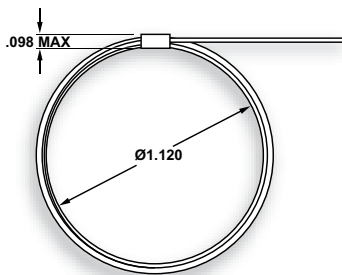
M85049/128-8

* M85049/128-5, -6, -7, -8 are proposed.

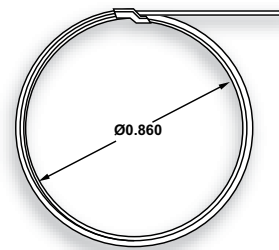
M85049/128-5 & M85049/128-6
SCPSE-04F & SCPSE-04C
TERMINATION TOOLS:
 DANIELS: DBS-1201▲
 SUNBANK: STS-1201▲
 M81306/2-02▲

M85049/128-7 & M85049/128-8
SCPBE-04F & SCPBE-04C
TERMINATION TOOLS:
 BAND-IT®: A30199●
 DANIELS: DBS-2200●
 GLENAIR: 600-061●
 M81306/1-02●

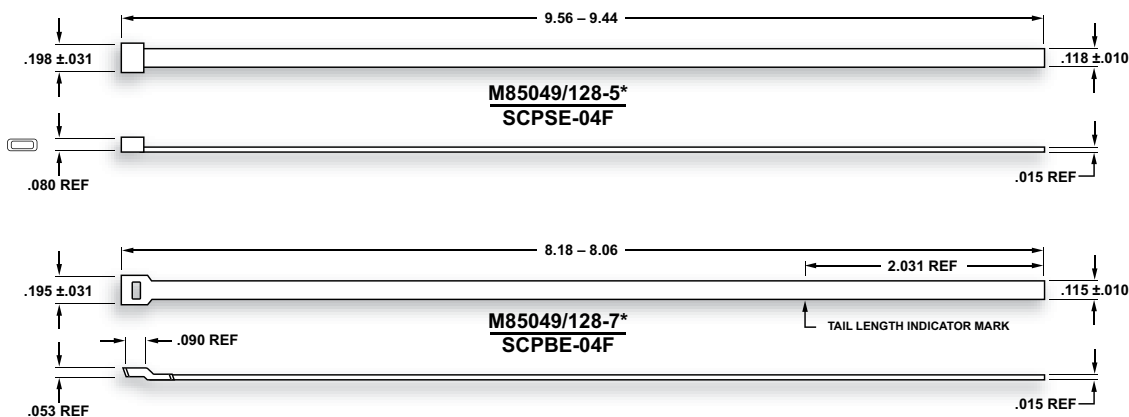
- One Step Tool
- ▲ Two Step Tool



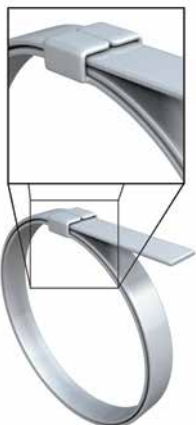
M85049/128-6*
SCPSE-04C



M85049/128-8*
SCPBE-04C

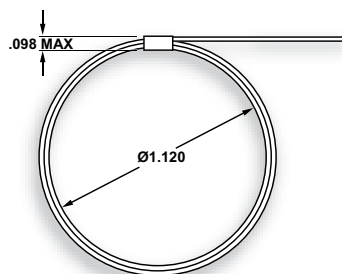


MINI-BANDS .115 WIDE - LONGER LENGTH

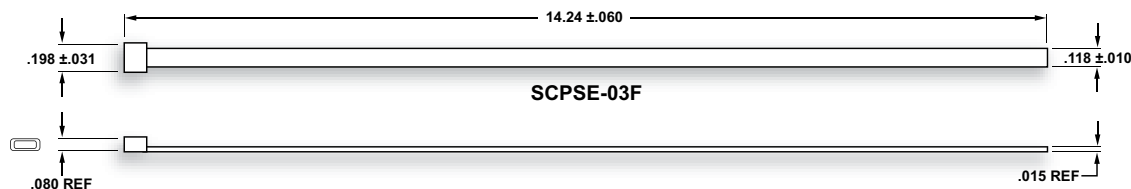


SCPSE-03F & SCPSE-03C
TERMINATION TOOLS:
 DANIELS: DBS-1201▲
 SUNBANK: STS-1201▲
 M81306/2-02▲

- ▲ Two Step Tool



SCPSE-03C



® Band-It® is a registered trademark of Band-It-IDEX, Inc., a division of IDEX Corporation, of which Spacecraft Components Corp. is not affiliated.



.245 WIDE QUARTER-INCH TERMINATION BANDS

M85049/128



M85049/128-2

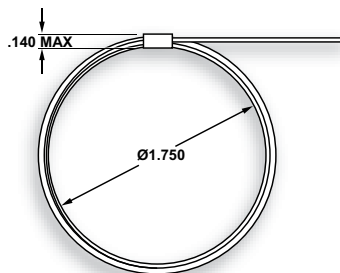


M85049/128-4

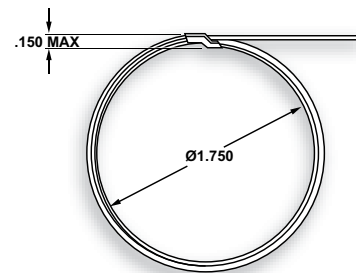
**M85049/128-1 & M85049/128-2
SCPSE-02F & SCPSE-02C**
TERMINATION TOOLS:
DANIELS: DBS-1101▲
SUNBANK: STS-1101▲
M81306/2-01▲

**M85049/128-3 & M85049/128-4
SCPBE-02F & SCPBE-02C**
TERMINATION TOOLS:
BAND-IT®: A40199●
DANIELS: DBS-2100●
GLENAIR: 600-058●
M81306/1-01●

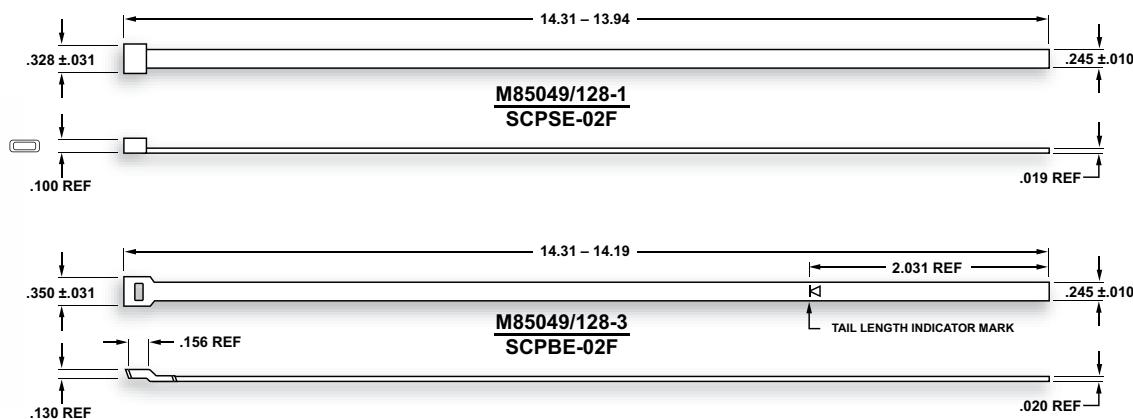
- One Step Tool
- ▲ Two Step Tool



**M85049/128-2
SCPSE-02C**



**M85049/128-4
SCPBE-02C**



EMI/RFI Band Application Tooling by **DMC** DANIELS MANUFACTURING CORPORATION

The termination of EMI/RFI shielding materials is a specialized science in today's aerospace wiring systems. Application tooling is a critical factor in the overall performance of the wiring system components.

DMC has worked closely with the world's leading connector accessory manufacturers to develop the necessary tooling and accessories to meet the stringent demands of aerospace and defense system contractors. The resulting products afford the user many benefits which include:

COMPATIBILITY with all currently available termination bands and systems.

RELIABILITY through the use of commercially proven components and tool design practice.

QUALITY & REPEATABILITY which are assured by a tension system.

SERVICE & CALIBRATION – All tools produced by DMC are adjustable, and may be easily checked and set by the user. Also, expendable components such as cut-off blades are available for simple replacement by the user.

LONG SERVICE LIFE – Properly maintained band application tools will produce thousands of reliable terminations.

AFFORDABILITY – DMC tools continue to be the most cost effective method to produce reliable wiring system shield terminations.

Models are available for .250 in. (6.350 mm) and .125 in. (3.175 mm) wide bands from all current suppliers to M85049/128.

THE PNEUMATIC BAND APPLICATION TOOL...

is a cost effective system that speeds production and improves ergonomic conditions which are present when manual tools are used. Band tension is precisely applied by a dependable pneumatic system which is consistent and repeatable.

The tension system of the pneumatic band tool is adjustable, and can be checked by use of the verification devices available from DMC. (See pages 68-69.)

The cutter blade and other components of the DMC Pneumatic Band tools are interchangeable with the same series hand tools. The rugged design and field replaceable blades make the PBT/PMBT series the best choice for production applications where EMI/RFI bands are used to terminate wire harness shielding.



THE HAND OPERATED BAND APPLICATION TOOL (REFERENCE AS81306/2)

is an excellent choice for many production and maintenance operations. Like the power driven models, they too can be calibrated by the user to provide reliable terminations throughout the service life.

The lightweight construction and small "nose" profile enable the user to apply termination bands in even the tightest of working areas.



CROSS REFERENCE/INDEX

DCP19*	Dust Cap for Plug	1K-14
DCR19*	Dust Cap for Receptacle	1K-14
DRP19*	Dummy Receptacle for Plug	1K-15
F69-*	Threaded Socket Contact	1K-13
M85049/128-1	Termination Band .245 Wide, Flat	1K-19
M85049/128-2	Termination Band .245 Wide, Coiled	1K-19
M85049/128-3	Termination Band .245 Wide, Flat	1K-19
M85049/128-4	Termination Band .245 Wide, Coiled	1K-19
M85049/128-5	Termination Band .115 Wide, Flat	1K-18
M85049/128-6	Termination Band .115 Wide, Coiled	1K-18
M85049/128-7	Termination Band .115 Wide, Flat	1K-18
M85049/128-8	Termination Band .115 Wide, Coiled	1K-18
R69-*.110	Crimp Socket Contact	1K-12
SCP36675-*	Flange Gasket for Front Panel Mount Receptacle	1K-17
SCP40450-*	Flange Gasket for Front Panel Mount Receptacle	1K-17
SCP40460-*	Flange Gasket for Rear Panel Mount Receptacle	1K-17
SCPB9690E*	Panel Mount Receptacle	1K-1
SCPB9690G*	Panel Mount Receptacle	1K-1
SCPB9690G2*	Panel Mount Receptacle	1K-2
SCPB9690SG*	Panel Mount Receptacle	1K-3
SCPB9690T*	Panel Mount Receptacle	1K-2
SCPB9691G*	In-Line Receptacle	1K-3
SCPB9691G2*	In-Line Receptacle	1K-4
SCPB9691SG*	In-Line Receptacle	1K-4
SCPB9696G*	Straight Plug	1K-5
SCPB9696G2*	Straight Plug	1K-5
SCPB9696SG*	Straight Plug	1K-6
SCPB9696T*	Straight Plug	1K-6
SCPB9697E*	Jam Nut Receptacle	1K-7
SCPB9697G*	Jam Nut Receptacle	1K-7
SCPB9697G2*	Jam Nut Receptacle	1K-8
SCPB9697SG*	Jam Nut Receptacle	1K-9
SCPB9697T*	Jam Nut Receptacle	1K-8
SCPB9698G*	90° Plug	1K-10
SCPB9698SG*	90° Plug	1K-10
SCPB9699E*	Thru Bulkhead Receptacle	1K-9
SCPBE-02C	Termination Band .245 Wide, Coiled	1K-19
SCPBE-02F	Termination Band .245 Wide, Flat	1K-19
SCPBE-04C	Termination Band .115 Wide, Coiled	1K-18
SCPBE-04F	Termination Band .115 Wide, Flat	1K-18
SCPSE-02C	Termination Band .245 Wide, Coiled	1K-19
SCPSE-02F	Termination Band .245 Wide, Flat	1K-19
SCPSE-03C	Termination Band .115 Wide, Coiled	1K-18
SCPSE-03F	Termination Band .115 Wide, Flat	1K-18
SCPSE-04C	Termination Band .115 Wide, Coiled	1K-18
SCPSE-04F	Termination Band .115 Wide, Flat	1K-18
T69-*.110	Crimp Pin Contact	1K-10
Z69-*	Threaded Pin Contact	1K-13

* Indicates additional alpha-numeric are required to complete part numbers.
 CS Contact our Sales Department for information on this part.





**You Can View
All of Our Catalogs &
Product Brochures
on Our Website!**

www.spacecraft.com

 **SPACECRAFT
COMPONENTS CORP.**

702-851-7600

SPACECRAFT COMPONENTS CORP.

Your Connector Consultant Since 1962

Try Our
Other
Connector
Products

CATALOG
325



CATALOG
475



CATALOG
801



CATALOG
875



CATALOG
900



CATALOG
102



CATALOG
202



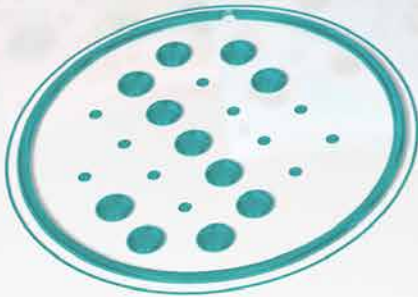
CATALOG
302



CATALOG
402



CATALOG
601



You Can
View All Our
Catalogs and
Products Brochures
on our Website
www.spacecraft.com



**SPACECRAFT
COMPONENTS CORP.**

Headquarters

3040 Clayton Street
North Las Vegas, NV 89032

Phone: 702.851.7600
Fax: 702.851.7620

Email: salesinfo@spacecraft.com
Web: www.spacecraft.com

Florida Office

4577 Nob Hill Road
Suite 106
Sunrise, FL 33351
Tel: 954.748.4540
Fax: 954.748.4128

South Carolina Office

25 Woods Lake Rd.,
Suite 403
Greenville, SC 29607
Tel: 954.748.4540
Fax: 954.748.4128

Italy Office

Spacecraft Components, Sp A
Milan, Italy
+39 (335) 719.4512

APR. 2022
CAT-875

COMPILED AND PRODUCED BY SPACECRAFT COMPONENTS CORP.
©2022 SPACECRAFT COMPONENTS CORP., NORTH LAS VEGAS, NV 89032